

CATALOGUE
GENERATOR SET
2026

INTEGRATE HYBRID ENERGY
SYSTEM SOLUTIONS

DIESEL
GAS

Add No. 130 Yongjin Road, High-End Equipment Manufacturing
Industrial Park, Beichen District, Tianjin, China

Web: www.pauway.cn

Email: sales@pauway.cn

Tel: +86-22-86859198



CONTENT

01

ABOUT PAUWAY	1
GLOBAL FOOTPRINTS	3
R&D AND MANUFACTURING	3

02

INDUSTRIAL RANGE DIESEL GENERATOR	
NAMING PRINCIPLE	5
COOPERATIVE PARTNERS	5
PWM SERIES 1250kVA-3250kVA	7
PWC SERIES 25kVA-2500kVA	11
PWP SERIES 1250kVA-2750kVA	15
PWS SERIES 1250kVA-2750kVA	19
PWY SERIES 25kVA-4125kVA	21

03

INDUSTRIAL RANGE GAS GENERATOR	
3016 SERIES 500kVA-1250kVA	29
2020 SERIES 1250kVA-2750kVA	33
3020 SERIES 2875kVA	37
4170 SERIES 3125kVA	43
2032 SERIES 3750kVA-5625kVA	45

04

CASE	49
------	----

CONTENT



WAY TO

- P – Pioneering Power Solutions
- A – Advanced and Assured
- U – Unparalleled Versatility

We are pioneering power solutions, leveraging advanced, Assured power generation products to cater to diverse power solution needs and user scenarios.

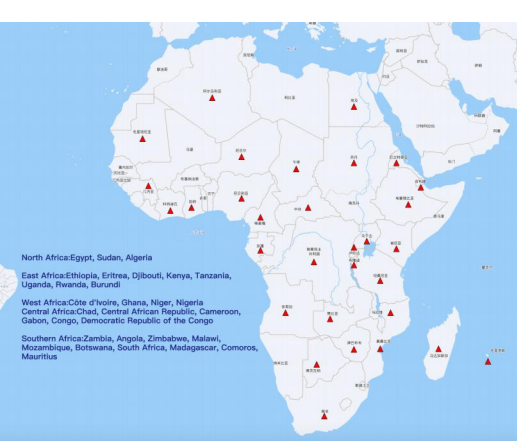
ABOUT PAUWAY

Since 2003, PAUWAY has focused on markets in Africa, South America and Asia, delivering power generation solutions to utility and industrial clients across over 80 countries worldwide. PAUWAY is committed to providing reliable and efficient electricity by rapidly deploying customized hybrid energy system solutions on a global scale. Leveraging advanced power generation technologies, comprehensive operation and maintenance services, as well as flexible commercial terms, PAUWAY helps clients secure quickly deployable temporary or long-term power supply.

There is no one-size-fits-all power solution. Our engineers collaborate with you to design systems tailored to your diverse needs—customizing components, integrating accessories and performance options to meet specific application requirements and regional standards. PAUWAY generator sets, built to world-class standards, boast high efficiency and low energy consumption, with CE and TLC certifications. Harness our versatile IFSS energy storage solutions to shape a sustainable future. Certified to ISO9001, ISO14001, and ISO45001.

PAUWAY's product range covers natural gas, diesel and methanol generator sets, plus control/parallel systems and IFSS smoothing energy storage—with power from 10kVA to 5600kVA. These are widely used in overseas industrial parks, AI computing centers, mining, cement, petroleum, chemicals, commerce and more, delivering solutions for continuous, emergency and peak-shaving power. With strong on-site technical capabilities, PAUWAY provides easy-to-install, tailored solutions based on customer needs and scenarios, fitting single markets or special projects. Beyond custom power solutions, it offers pre-commissioning training on installation, debugging, operation and maintenance—ensuring consistent satisfaction and trusted experiences.

PAUWAY is located in Tianjin Beichen National Hi-Tech Industrial Development Zone. Its 10,000m², 6,000m² and 7,000m² workshops form three production centers. Leveraging advanced technologies and industry expertise, its products outperform domestic peers. The base comprises R&D center, unit assembly lines, electrical production lines, intelligent testing center, quality control center and spare parts logistics center. Production facilities are continuously upgraded to meet manufacturing needs.



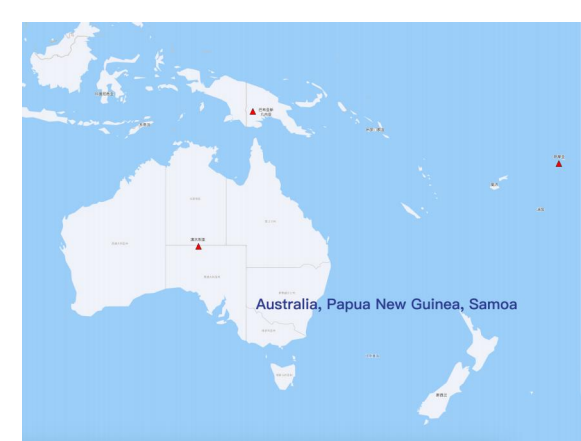
Africa



Asia



South America



Oceania

GLOBAL FOOTPRINTS

SINCE 2003

70,000 m², 4 zones: diesel production ↘
 gas generator production, R&D/office, warehousing

R&D AND MANUFACTURING

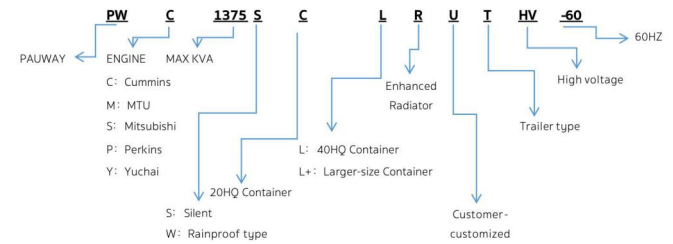


INDUSTRIAL RANGE DIESEL GENERATOR

Amid a world of constant change
we stand with you to energize development



NAMING PRINCIPLE



COOPERATIVE PARTNERS





50 Hz 60 Hz



Continuous Energy-efficient

PAUWAY is an OEM authorized manufacturer and an important global partner of Germany's MTU (a subsidiary of Rolls-Royce). The core cooperation between the two parties includes:

- Original Power: PAUWAY's flagship series such as PWM are prioritized to be equipped with original German MTU 1600/2000/4000 series engines, ensuring core power performance.
- Technology and Service Collaboration: PAUWAY receives technical support from MTU, and is able to provide factory-level maintenance, overhaul and spare parts supply, with services covering global projects and key initiatives.
- Customized Development: For scenarios such as data centers, military industry and overseas power stations, the two parties jointly develop customized unit solutions featuring high voltage, low noise and continuous operation.

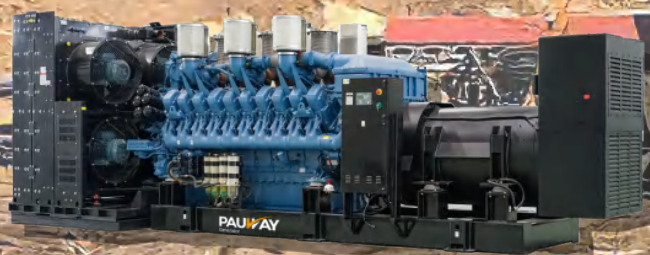


7*1600kW 10.5kV 50Hz Container type



Applications:

- Continous & Prime Power: Remote Off-Grid Areas, Industrial Continuous Production, Off-Grid Facilities, Temporary Infrastructure Projects
- Standby Power Applications: Data centers, ICU/operating rooms in Grade A tertiary hospitals, financial exchanges, High-end hotels, large shopping malls, airports/High-speed rail stations, Nuclear power plant security power, LNG terminals, port loading/unloading equipment, Urban drainage pumping stations, emergency command centers, post-disaster rescue sites.



Model: PWM3750RHV

PWM SERIES

POWER BY MTU | 400V, 1500RPM, 50Hz
 Note: Some low-power models not listed. Contact us for details.



PAUWAY MODEL	POWER				ENGINE BRAND	ENGINE MODEL	ALTERNATOR LEROY-SOMER	DIMENSION (L*W*H mm)					
	PRP		ESP					OPEN TYPE			STANDARD SOUNDPROOF		
	(KW)	(KVA)	(KW)	(KVA)				L	W	H	L	W	H
PWM1000	720	900	NA	NA	mtu	16V2000G16F	TAL A49 D	4450	1600	2315	ISO 20'ft HQ		
PWM1125	800	1000	NA	NA	mtu	16V2000G26F	TAL A49 E	4450	1600	2315	ISO 20'ft HQ		
PWM1125M	NA	NA	900	1125	mtu	16V2000G76F	LSA 50.2 M6	4450	1800	2400	ISO 20'ft HQ		
PWM1250	900	1125	NA	NA	mtu	16V2000G36F	LSA 50.2 M6	4450	1800	2400	ISO 20'ft HQ		
PWM1250M	NA	NA	1000	1250	mtu	16V2000G86F	LSA 50.2 M6	4700	1900	2465	ISO 20'ft HQ		
PWM1375	1000	1250	NA	NA	mtu	18V2000G26F	LSA 50.2 M6	4700	1900	2465	ISO 20'ft HQ		
PWM1375M	NA	NA	1100	1375	mtu	18V2000G76F	LSA 50.2 L8	4700	1900	2465	ISO 20'ft HQ		
PWM1500	1100	1375	NA	NA	mtu	12V4000G23RF	LSA 50.2 L8	3950	1850	2260	ISO 20'ft HQ		
PWM1800	1250	1563	1430	1788	mtu	12V4000G23F	LSA 50.2 VL10	4200	1850	2260	ISO 20'ft HQ		
PWM2000	1400	1750	1600	2000	mtu	12V4000G63F	LSA 52.3 S5	4200	1850	2260	ISO 40'ft HQ		
PWM2250	1600	2000	1800	2250	mtu	16V4000G23F	LSA 52.3 S6	5450	1845	2560	ISO 40'ft HQ		
PWM2500	1800	2250	2000	2500	mtu	16V4000G63F	LSA 52.3 L9	5450	1845	2560	ISO 40'ft HQ		
PWM2750	2000	2500	2200	2750	mtu	16V4000G34F	LSA 52.3 L12	5450	1845	2560	ISO 40'ft HQ		
PWM2750M	2000	2500	2200	2750	mtu	20V4000G23F	LSA 52.3 L12	7350	2200	2830	ISO 40'ft HQ		
PWM3000	2200	2750	2400	3000	mtu	20V4000G63F	LSA 52.3 UL16	7350	2200	2830	13000	3000	3500
PWM3250	2400	3000	2600	3250	mtu	20V4000G63LF	LSA 53.2 M9	7350	2200	3000	13000	3000	3500
PWM3500	2600	3250	2800	3500	mtu	20V4000G44F	LSA 53.2 M12	7500	2200	3200	13500	3000	3600
PWM3750	2700	3375	3000	3750	mtu	20V4000G44LF	LSA 54.2 M10	7600	2200	3200	13500	3000	3600

POWER BY MTU | 440V, 1800RPM, 60Hz
 Note: Some low-power models not listed. Contact us for details.



PAUWAY MODEL	POWER				ENGINE BRAND	ENGINE MODEL	ALTERNATOR LEROY-SOMER	DIMENSION (L*W*H mm)					
	PRP		ESP					OPEN TYPE			STANDARD SOUNDPROOF		
	(KW)	(KVA)	(KW)	(KVA)				L	W	H	L	W	H
PWM1125-60	900	1125	NA	NA	mtu	16V2000B76	TAL A49 E	4375	2060	2445	ISO 20'ft HQ		
PWM1250-60	1000	1250	NA	NA	mtu	18V2000B76	LSA 50.2 M6	5150	2150	2500	ISO 20'ft HQ		
PWM1875-60	1360	1700	1500	1875	mtu	12V4000G43S	LSA 50.2 L8	5625	2150	2650	ISO 40'ft HQ		
PWM2200-60	1600	2000	1760	2200	mtu	12V4000G83S	LSA 52.3 S5	5625	2150	2650	ISO 40'ft HQ		
PWM2500-60	1820	2275	2000	2500	mtu	16V4000G43S	LSA 52.3 S7	6850	2200	2600	ISO 40'ft HQ		
PWM2750-60	2000	2500	2200	2750	mtu	16V4000G83S	LSA 52.3 L9	6850	2200	2600	ISO 40'ft HQ		
PWM3125-60	2250	2813	2500	3125	mtu	20V4000G43S	LSA 52.3 L12	7350	2200	2830	ISO 40'ft HQ		
PWM3500-60	2500	3125	2750	3438	mtu	20V4000G83S	LSA 53.2 M9	7350	2200	2830	ISO 40'ft HQ		
PWM3750-60	2760	3450	3000	3750	mtu	20V4000G83LS	LSA 53.2 M12	7350	2200	2830	ISO 40'ft HQ		

Notes:
 All ratings are for guidance only, please refer to the specific genset technical data sheet for final power ratings.
 All ratings data based on operation under ISO 8528-1, ISO 3046, DIN6271 conditions using typical fan sizes and drive ratios. Performance tolerance quoted by Paaway is ±5%.
 Prime Power = Power at available load in lieu of main power network. An overload of 10% permitted for one hour in every twelve hours of operation.
 Standby Power = Power available at a variable load in the event of a main power network failure up to a maximum of 500 hours per year. No over load is permitted.
 Rated power factor: 0.80.
 N/A: NOT Available.

Paaway reserves the right to make changes in model, technical specification, color, configuration and accessories without prior notice. Please contact your sales team before ordering.

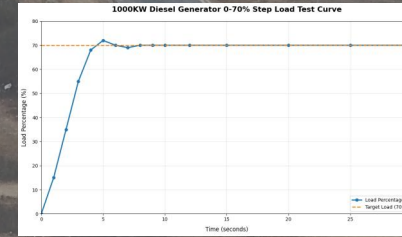
The generator set is compatible with multiple voltage classes, such as 380V, 415V, 480V, 6.3kV, 10kV, 10.5kV and 13.8kV. Configurations may vary subject to requirements. For detailed technical specifications and customization needs, please contact us or your local authorized agent.

PAUWAY

PWC SERIES

25kVA	3500kVA	50Hz
30kVA	3350kVA	60Hz

PAUWAY and Cummins have partnered for over a decade. The PWC series—renowned for its exceptional cost-effectiveness, robust durability, and low maintenance requirements—is widely deployed across public infrastructure, industrial, and mining applications. Engineered to deliver consistent performance even under complex operating conditions, it provides reliable, uninterrupted power solutions to more than 10,000 users worldwide. Notably, individual PWC generator sets have achieved an operational lifespan exceeding 70,000 hours.



50 Hz **60 Hz**

Rapid Response & Long-Lasting Durability

Applications:

Continuous & Prime Power Mining operations, island power supply, rental power services, oil & gas field operations, sports event power support

Standby Power Applications Hospitals, commercial complexes, construction projects, transportation hubs.



Load Bank

3*1600kW 13.8kV 60Hz Container type



PWC SERIES

POWER BY CUMMINS | 400V, 1500RPM, 50Hz
 Note: Some high-power models not listed. Contact us for details.

50 Hz

PAUWAY MODEL	POWER				ENGINE BRAND	ENGINE MODEL	ALTERNATOR LEROY-SOMER	DIMENSION (L*W*H mm)								
	PRP		ESP					OPEN TYPE			STANDARD SOUNDPROOF					
	(KW)	(KVA)	(KW)	(KVA)				L	W	H	L	W	H			
PWC24	17	21	19	24	CUMMINS	4B3.9-G11	TAL A40 G	1760	800	1600	2200	1000	1800			
PWC30	22	27	24	30	CUMMINS	4B3.9-G1	TAL A42 C	1760	800	1600	2200	1000	1800			
PWC30D	22	27	24	30	CUMMINS	4B3.9-G2	TAL A42 C	1730	800	1600	2200	1000	1800			
PWC34	25	31	27	34	CUMMINS	4B3.9-G12	TAL A42 E	1760	800	1600	2200	1000	1800			
PWC40	32	40	35	44	CUMMINS	4BT3.9-G1	TAL A42 F	1760	800	1600	2200	1000	1800			
PWC40D	32	40	35	44	CUMMINS	4BT3.9-G2	TAL A42 F	1730	800	1600	2200	1000	1800			
PWC65	45	56	50	62	CUMMINS	4BT3.9-G2	TAL A42 H	1855	900	1650	2450	1000	1800			
PWC90	64	80	72	90	CUMMINS	4BT3.9-G11	TAL A44 C	1855	900	1650	2450	1000	1800			
PWC103	75	94	82	102	CUMMINS	6BT5.9-G1	TAL A44 D	2185	990	1650	2750	1100	1800			
PWC103D	75	94	82	102	CUMMINS	6BT5.9-G2	TAL A44 D	2185	990	1650	2750	1100	1800			
PWC105	76	95	84	105	CUMMINS	4BT3.9-G13	TAL A44 D	2185	990	1650	2750	1100	1800			
PWC110	80	100	88	110	CUMMINS	4BT3.9-G3	TAL A44 D	2185	990	1650	2750	1100	1800			
PWC115	84	105	92	115	CUMMINS	6BT5.9-G2	TAL A44 E	2185	990	1650	2750	1100	1800			
PWC125	92	115	100	125	CUMMINS	6BT5.9-G2	TAL A44 E	2185	990	1650	2750	1100	1800			
PWC142	104	130	114	142	CUMMINS	6BTA5.9-G2	TAL A44 H	2420	990	1650	3300	1100	1900			
PWC170	125	156	138	172	CUMMINS	6BTA5.9-G12	TAL A44 K	2420	990	1650	3300	1100	1900			
PWC200	145	181	160	200	CUMMINS	6CTA8.3-G1	TAL A44 M	2420	990	1650	3300	1100	1900			
PWC200D	145	181	160	200	CUMMINS	6CTA8.3-G2	TAL A44 M	2420	990	1650	3300	1100	1900			
PWC220	160	200	172	215	CUMMINS	6CTA8.3-G2	TAL A44 M	2485	990	1650	3700	1200	2150			
PWC250	NA	NA	200	250	CUMMINS	6CTA8.3-G2	TAL A46 D	2485	990	1650	3700	1200	2150			
PWC275	200	250	210	260	CUMMINS	6LTA8.9-G9	TAL A46 D	2530	990	1650	3700	1200	2150			
PWC275D	200	250	220	275	CUMMINS	6LTA8.9-G3	TAL A46 D	2530	990	1650	3700	1200	2150			
PWC275N	200	250	220	275	CUMMINS	NTA855-G1	TAL A46 D	2530	990	1650	3700	1200	2150			
PWC300	210	262	240	300	CUMMINS	QSM11-G1	TAL A46 E	2800	1350	1650	3500	1550	2000			
PWC300D	216	270	240	300	CUMMINS	6LTA8.9-G3	TAL A46 E	2600	1200	1850	3900	1500	2200			
PWC340	240	300	270	337	CUMMINS	QSM11-G2	TAL A46 F	2800	1350	1650	3500	1550	2000			
PWC350M	250	312	280	350	CUMMINS	M15-G3	TAL A46 G	2800	1350	1750	3500	1550	2000			
PWC350	255	319	280	350	CUMMINS	QSM11-G2	TAL A46 G	2800	1350	1750	3500	1550	2000			
PWC350D	255	319	280	350	CUMMINS	6LTA8.9-G1	TAL A46 G	2600	1200	1850	3900	1700	2200			
PWC375Q	270	337	300	375	CUMMINS	QSM11-G3	TAL A46 H	2800	1350	1850	3500	1700	2200			
PWC375	275	344	300	375	CUMMINS	M15-G4	TAL A46 H	2800	1350	1850	3500	1800	2200			
PWC388	280	350	310	387	CUMMINS	QSM11-G4	TAL A46 H	2800	1350	1850	3500	1800	2200			
PWC400	290	362	320	400	CUMMINS	QSM11-G5	TAL A46 H	2800	1350	1850	3500	1800	2200			
PWC412Q	300	375	330	412	CUMMINS	QSM11-G6	TAL A47 A	2800	1450	1850	3500	1800	2200			
PWC412M	300	375	330	412	CUMMINS	M15-G5	TAL A47 A	3350	1420	1890	4050	1700	2400			
PWC412	300	375	330	412	CUMMINS	KTA19-G2	TAL A47 A	3350	1420	1890	4050	1700	2400			
PWC425	310	387	340	425	CUMMINS	6ZTAA13-G3	TAL A47 A	3300	1550	1800	4050	2000	2250			
PWC440	320	400	350	437	CUMMINS	QSN7-G3	TAL A47 A	3300	1300	1750	3500	1800	2200			
PWC450	320	400	360	450	CUMMINS	M15-G6	TAL A47 A	3300	1300	1750	3500	1800	2200			
PWC468	350	437	375	468	CUMMINS	QSZ13-G2	TAL A47 B	3400	1250	1800	4630	1660	2250			
PWC475	350	437	380	475	CUMMINS	6ZTAA13-G2	TAL A47 B	3300	1550	1800	4050	2000	2250			
PWC475D	350	437	380	475	CUMMINS	6ZTAA13-G4	TAL A47 B	3300	1550	1800	4050	2000	2250			
PWC500DQ	360	450	400	500	CUMMINS	QSZ13-G5	TAL A47 B	3400	1250	1800	4630	1660	2250			
PWC500M	360	450	400	500	CUMMINS	M15-G7	TAL A47 B	3350	1420	1890	4750	1680	2400			
PWC500	360	450	400	500	CUMMINS	KTA19-G3	TAL A47 B	3350	1420	1890	4750	1680	2400			
PWC500D	380	475	400	500	CUMMINS	QSZ13-G3	TAL A47 C	3400	1250	2050	4630	1660	2250			
PWC550D	400	500	440	550	CUMMINS	QSZ13-G10	TAL A47 C	3400	1250	2050	4630	1660	2250			
PWC550	400	500	450	562	CUMMINS	KTA19-G3A	TAL A47 C	3350	1420	1890	4750	1680	2400			
PWC550K	400	500	450	562	CUMMINS	KTA19-G4	TAL A47 C	3350	1420	1890	4750	1680	2400			
PWC560	410	512	450	562	CUMMINS	M15-G8	TAL A47 D	3350	1420	1890	4750	1680	2400			
PWC688A	NA	NA	550	688	CUMMINS	KTA19-G6A	TAL A47 F	3350	1420	1890	4750	1680	2400			
PWC688	500	625	550	688	CUMMINS	KTA19-G8A	TAL A47 F	3350	1420	1890	4750	1680	2400			
PWC688K	500	625	560	700	CUMMINS	KT38-G	TAL A47 F	3650	1640	2050	5200	1860	2550			
PWC688Q	500	625	560	700	CUMMINS	QSK19-G35	TAL A47 F	3650	1640	2050	5200	1860	2550			
PWC713	520	650	570	712	CUMMINS	QSK19-G4	TAL A47 F	3650	1640	2050	5200	1860	2550			
PWC780	570	712	630	787	CUMMINS	KTA38-G1	TAL A49 B	4375	1730	2445	5900	2000	2600			
PWC780K	570	712	630	787	CUMMINS	KTA38-G1B	TAL A49 B	4375	1730	2445	5900	2000	2600			
PWC825	600	750	660	825	CUMMINS	KTA38-G2	TAL A49 B	4375	1730	2445	5900	2000	2600			
PWC880	640	800	710	888	CUMMINS	KTA38-G2B	TAL A49 C	4375	2060	2445	5900	2000	2600			
PWC1000	730	912	800	1000	CUMMINS	KTA38-G2A	TAL A49 E	4375	2060	2445	5900	2000	2600			
PWC1100	800	1000	880	1100	CUMMINS	KTA38-G5	TAL A49 E	4375	2060	2445	5900	2000	2600			
PWC1250	NA	NA	1000	1250	CUMMINS	KTA38-G9	LSA 50.2 M6	4375	2060	2445	5900	2000	2600			
PWC1375Q	1000	1250	1100	1375	CUMMINS	QSK38-G5	LSA 50.2 M6	5000	2200	2500	ISO 201ft HQ					
PWC1375	1000	1250	1100	1375	CUMMINS	KTA50-G3	LSA 50.2 M6	5040	2060	2400	ISO 201ft HQ					
PWC1375K	1020	1275	1100	1375	CUMMINS	KTA50-G12	LSA 50.2 L7	5100	2060	2400	ISO 201ft HQ					
PWC1600K	1100	1375	1280	1600	CUMMINS	KTA50-G12A	LSA 50.2 L8	5200	2100	2400	ISO 201ft HQ					
PWC1650	1100	1375	1320	1650	CUMMINS	KTA50-G8	LSA 50.2 L8	5250	2150	2400	ISO 201ft HQ					
PWC1650	1200	1500	1320	1650	CUMMINS	KTA50-GS8	LSA 50.2 L8	5300	2150	2400	ISO 201ft HQ					
PWC1875	1340	1675	1500	1875	CUMMINS	KTA50-G15X	LSA 52.3 S5	5400	2200	2400	ISO 401ft HQ					
PWC2060	1600	2000	1650	2063	CUMMINS	KTA50-G16B	LSA 52.3 S6	5450	2200	2400	ISO 401ft HQ					

POWER BY CUMMINS | 440V, 1800RPM, 60Hz
 Note: Some high-power models not listed. Contact us for details.

60 Hz

PAUWAY MODEL	POWER				ENGINE BRAND	ENGINE MODEL	ALTERNATOR LEROY-SOMER	DIMENSION (L*W*H mm)								
	PRP		ESP					OPEN TYPE			STANDARD SOUNDPROOF					
	(KW)	(KVA)	(KW)	(KVA)				L	W	H	L	W	H			
PWC28-60	20	25	22	28	Cummins	4B3.9-G11	TAL A40 G	1730	800	1600	2200	1000	1800			
PWC33-60	24	30	27	34	Cummins	4B3.9-G2	TAL A42 C	1730	800	1600	2200	1000	1800			
PWC38-60	28	35	30	38	Cummins	4B3.9-G12	TAL A42 E	1730	800	1600	2200	1000	1800			
PWC50-60	36	45	40	50	Cummins	4BT3.9-G2	TAL A42 F	1730	800	1600	2200	1000	1800			
PWC70-60	51	64	56	70	Cummins	4BT3.9-G2	TAL A42 H	1855	900	1650	2450	1000	1800			
PWC85-60	60	75	68	85	Cummins	4BT3.9-G2	TAL A44 C	1855	900	1650	2450	1000	1800			
PWC100-60	72	90	80	100	Cummins	4BT3.9-G11	TAL A44 C	1855	900	1650	2450	1000	1800			
PWC120-60	84	105	92	115	Cummins	6BT5.9-G2	TAL A44 D	2185	990	1650	2750	1100	1800			
PWC145-60	104	130	116	145	Cummins	6BT5.9-G2	TAL A44 E	2185	990	1650	2750	1100	1800			
PWC155-60	116	145	125	156	Cummins	6BTA5.9-G2	TAL A44 H	2420	990	1650	3300	1100	1900			
PWC175-60	128	160	140	175	Cummins	6BTA5.9-G12	TAL A44 J	2420	990	1650	3300	1100	1900			
PWC210-60	160	200	170	212	Cummins	6CTA8.3-G2	TAL A44 L	2420	990	1650	3300	1100	1900			
PWC250-60	184	230	200	250	Cummins	6CTA8.3-G2	TAL A44 M	2485	990	1650	3700	1200	2150			
PWC275-60	NA	NA	220	275	Cummins	6CTA8.3-G9	TAL A46 D	2530	990	1650	3700	1200	2150			
PWC275-60	NA	NA	220	275	Cummins	NTA855-GA	TAL A46 D	2500	960	1850	3590	1150	2050			
PWC290-60	208	260	228	285	Cummins	6LTA8.9-G2	TAL A46 E	2530	990	1650	3700	1200	2150			
PWC310-60	224	280	248	310	Cummins	6LTA8.9-G3	TAL A46 D	2500	960	1850	3590	1150	2050			
PWC315-60	228	285	252	315	Cummins	6LTA8.9-G3	TAL A46 E	2500	960	1850	3590	1150	2050			
PWC345-60	250	312	275	344	Cummins	NTA855-G1	TAL A46 E	3000	1210	1800	4350	1380	2250			
PWC380-60	250	313	280	350	Cummins	QSM11-G1	TAL A46 E	3000	1210	180						



PWP
SERIES

9kVA	2500kVA	50Hz
11kVA	1875kVA	60Hz

50 Hz 60 Hz

Rapid Startup
Critical Standby

PAUWAY Energy x Perkins (UK): A long-term strategic partnership. We excel in power matching, technical collaboration & global service—Perkins' top Asia-Pacific generator integration partner. Leveraging Perkins' reliable standby power and PAUWAY's custom integration, we deliver trusted generators worldwide, with core strength in overseas projects & industrial emergencies.

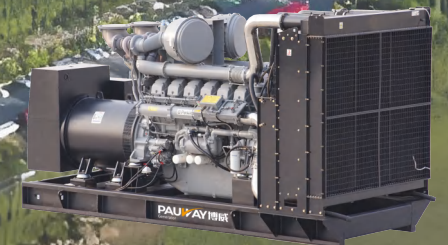
Applications :

Prime Power: Telecom, Sports and events, Small to big size factories, lighting tower, Hybrid Energy

Standby Power: Telecom, Hospital, Small to big size factories, Malls and buildings, Restaurants, Airport & stations



10*1600kW 0.4kV 50Hz Open Type



PWP SERIES

POWER BY PERKINS | 400V, 1500RPM, 50Hz
 Note: Some low-power models not listed. Contact us for details.



PAUWAY MODEL	POWER				ENGINE BRAND	ENGINE MODEL	ALTERNATOR LEROY-SOMER	DIMENSION (L*W*H mm)					
	PRP		ESP					OPEN TYPE			STANDARD SOUNDPROOF		
	(KW)	(KVA)	(KW)	(KVA)				L	W	H	L	W	H
PWP825	600	750	660	825	Perkins	4006-23TAG2A	TAL A49 B	3450	1540	2130	5150	2000	2600
PWP900	640	800	720	900	Perkins	4006-23TAG3A	TAL A49 C	3450	1540	2130	5150	2000	2600
PWP1000	720	900	800	1000	Perkins	4008-TAG1A	TAL A49 D	4300	2100	2300	5150	2000	2800
PWP1125	800	1000	900	1125	Perkins	4008-TAG2A	TAL A49 E	4650	2040	2500	ISO 20ft HQ		
PWP1250	900	1125	1000	1250	Perkins	4008-30TAG3	LSA 50.2 M6	4650	2050	2500	ISO 20ft HQ		
PWP1375	1000	1250	1108	1385	Perkins	4012-46TWG2A	LSA 50.2 M6	4700	2050	2500	ISO 20ft HQ		
PWP1650	1200	1500	1325	1657	Perkins	4012-46TAG2A	LSA 50.2 L8	5300	2400	2600	ISO 20ft HQ		
PWP1875	1365	1706	1504	1880	Perkins	4012-46TAG3A	LSA 52.3 S5	5300	2400	2600	ISO 40ft HQ		
PWP2020	1480	1850	1622	2028	Perkins	4016-TAG1A	LSA 52.3 S5	5400	2600	2650	ISO 40ft HQ		
PWP2000	1480	1850	1600	2000	Perkins	4016-61TRG1	LSA 52.3 S5	5400	2700	2650	ISO 40ft HQ		
PWP2200	1600	2000	1760	2200	Perkins	4016-61TRG2	LSA 52.3 S6	6100	2650	2800	ISO 40ft HQ		
PWP2250	1650	2063	1811	2263	Perkins	4016-TAG2A	LSA 52.3 S7	5400	2600	2650	ISO 40ft HQ		
PWP2500	1818	2272	2000	2500	Perkins	4016-61TRG3	LSA 52.3 L9	6225	2590	2880	ISO 40ft HQ		
PWP2500P	2000	2500	NA	NA	Perkins	4016-61TRG3X	LSA 52.3 L9	6225	2590	2880	ISO 40ft HQ		

POWER BY PERKINS | 440V, 1800RPM, 60Hz
 Note: Some low-power models not listed. Contact us for details.



PAUWAY MODEL	POWER				ENGINE BRAND	ENGINE MODEL	ALTERNATOR LEROY-SOMER	DIMENSION (L*W*H mm)					
	PRP		ESP					OPEN TYPE			STANDARD SOUNDPROOF		
	(KW)	(KVA)	(KW)	(KVA)				L	W	H	L	W	H
PWP825-60	600	750	660	825	Perkins	4006-23TAG2A	TAL A473 F	3965	1710	2200	5900	2000	2600
PWP900-60	680	850	748	935	Perkins	4006-23TAG3A	TAL A49 B	3965	1710	2200	5900	2000	2600
PWP1000-60	725	906	800	1000	Perkins	4008TAG1	TAL A49 C	3965	1710	2200	5900	2000	2600
PWP1100-60	800	1000	900	1125	Perkins	4008TAG2	TAL A49 D	4650	2060	2300	ISO 20' ft HQ		
PWP1375-60	1000	1250	1100	1375	Perkins	4012-46TWG2A	LSA 50.2 M6	4800	2000	2700	ISO 20' ft HQ		
PWP1500-60	1100	1375	1204	1505	Perkins	4012-46TAG1A	LSA 50.2 M6	4800	2000	2700	ISO 20' ft HQ		
PWP1650-60	1200	1500	1320	1650	Perkins	4012-46TAG2A	LSA 50.2 L7	5050	2200	2600	ISO 40' ft HQ		
PWP1875-60	1350	1688	1500	1875	Perkins	4012-46TAG3A	LSA 50.2 L8	5050	2200	2600	ISO 40' ft HQ		

Notes:

All ratings are for guidance only, please refer to the specific genset technical data sheet for final power ratings.

All ratings data based on operation under ISO 8528-1, ISO 3046, DIN6271 conditions using typical fan sizes and drive ratios. Performance tolerance quoted by Pauway is ±5%.

Prime Power = Power at available load in lieu of main power network. An overload of 10% permitted for one hour in every twelve hours of operation.

Standby Power = Power available at a variable load in the event of a main power network failure up to a maximum of 500 hours per year. No over load is permitted.

Rated power factor: 0.80.

N/A=NOT Available.

Pauway reserves the right to make changes in model, technical specification, color, configuration and accessories without prior notice. Please contact your sales team before ordering.

The generator set is compatible with multiple voltage classes, such as 380V, 415V, 480V, 6.3kV, 10kV, 10.5kV and 13.8kV. Configurations may vary subject to requirements. For detailed technical specifications and customization needs, please contact us or your local authorized agent.



**PWS
SERIES**

→ 625kVA	2750kVA	50Hz
→ 650kVA	2875kVA	60Hz

PAUWAY Energy (core manufacturing base: PAUWAY Tianjin) has a deep strategic partnership with Mitsubishi Heavy Industries (MHI) and Mitsubishi JV SME, focusing on R&D, manufacturing and global expansion of high-quality diesel generator sets. As an authorized Mitsubishi engine supplier, PAUWAY uses original/tech-licensed Mitsubishi engines (S6R2/S12R/S16R series, including SME models) for exclusive series like PWS, with production complying strictly with ISO 8528, IEC and Mitsubishi JIS standards.

MHI provides core power tech, quality control and global support; PAUWAY handles unit integration, local production, full-life-cycle O&M and customized solutions for industrial, emergency and data center scenarios

Applications :

- Continuous & Prime Power : Industrial Continuous Production , Off-Grid Facilities , Temporary Infrastructure Projects
- Standby Power Applications : Data centers, hospitals, financial exchanges , High-end hotels, large shopping malls, airports/High-speed rail stations , Nuclear power plant security power, LNG terminals, port loading/unloading equipment , Urban drainage pumping stations, emergency command centers, post-disaster rescue sites.



*Durable, reliable
easy to maintain*

POWER BY MITSUBISHI | 400V, 1500RPM, 50Hz
SME



PAUWAY MODEL	POWER				ENGINE BRAND	ENGINE MODEL	ALTERNATOR LEROY-SOMER	DIMENSION (L*W*H mm)					
	PRP		ESP					OPEN TYPE			STANDARD SOUNDPROOF		
	(KW)	(KVA)	(KW)	(KVA)				L	W	H	L	W	H
PWS750	500	625	600	750	SME	S6R2-PTA-C	TAL A473 F	3550	1410	2150	5900	2060	2550
PWS825	600	750	660	825	SME	S6R2-PTAA-C	TAL A49 B	4050	1620	2050	5900	2060	2550
PWS1375	1000	1250	1100	1375	SME	S12R-PTA-C	LSA 50.2 M6	4500	2200	2520	ISO 20'ft HQ		
PWS1500	1100	1375	1200	1500	SME	S12R-PTA2-C	LSA 50.2 L8	4500	2200	2520	ISO 20'ft HQ		
PWS1650	1200	1500	1320	1650	SME	S12R-PTAA2-C	LSA 50.2 L8	5050	2210	2560	ISO 40'ft HQ		
PWS1875	1370	1712	1500	1875	SME	S16R-PTA-C	LSA 52.3 S5	5350	2200	2550	ISO 40'ft HQ		
PWS2000	1500	1875	1600	2000	SME	S16R-PTA2-C	LSA 52.3 S6	5350	2200	2550	ISO 40'ft HQ		
PWS2250	1600	2000	1800	2250	SME	S16R-PTAA2-C	LSA 52.3 S6	5800	2210	2560	ISO 40'ft HQ		
PWS2500	1800	2250	2000	2500	SME	S16R2-PTAW-C	LSA 52.3 L9	5800	2210	2560	13000	3000	3500
PWS2500A2	1800	2250	2000	2500	SME	S16R2-A2PTAW-C	LSA 52.3 L9	5800	2210	2560	13000	3000	3500
PWS2500A	1800	2250	2000	2500	SME	S16R2-PTA-C	LSA 52.3 L9	5800	2210	2560	13000	3000	3500
PWS2750	2000	2500	2200	2750	SME	S16R2-PTAW2-E-C	LSA 52.3 L12	6000	2210	2560	13500	3000	3500

POWER BY MITSUBISHI | 440V, 1800RPM, 60Hz



PAUWAY MODEL	POWER				ENGINE BRAND	ENGINE MODEL	ALTERNATOR LEROY-SOMER	DIMENSION (L*W*H mm)					
	PRP		ESP					OPEN TYPE			STANDARD SOUNDPROOF		
	kW	kVA	kW	kVA				L	W	H	L	W	H
PWS750-60	520	650	610	762	MHI	S6R-PTA	TAL A473 E	3550	1410	2150	5900	2060	2550
PWS940-60	660	825	750	937	MHI	S12A2-PTA	TAL A49 B	3550	1410	2150	5900	2060	2550
PWS1050-60	750	937	840	1050	MHI	S12A2-PTA2	TAL A49 C	3550	1410	2150	5900	2060	2550
PWS1250-60	900	1125	980	1225	MHI	S12H-PTA	TAL A49 E	3550	1410	2150	5900	2060	2550
PWS1435-60	1050	1312	1150	1437	MHI	S12R-PTA	LSA 50.2 M6	4500	2200	2520	ISO 20' ft HQ		
PWS1625-60	1200	1500	1300	1625	MHI	S12R-PTA2	LSA 50.2 L8	4500	2200	2520	ISO 20' ft HQ		
PWS1800-60	1260	1575	1450	1812	MHI	S12R-PTAA2	LSA 50.2 V1.10	5050	2210	2560	ISO 40' ft HQ		
PWS1950-60	1400	1750	1550	1937	MHI	S16R-PTA	LSA 52.3 S5	5350	2200	2550	ISO 40' ft HQ		
PWS2200-60	1570	1962	1730	2162	MHI	S16R-PTA2	LSA 52.3 S6	5350	2200	2550	ISO 40' ft HQ		
PWS2375-60	1720	2150	1900	2375	MHI	S16R-PTAA2	LSA 52.3 S7	5800	2210	2560	ISO 40' ft HQ		

Notes:

All ratings are for guidance only, please refer to the specific genset technical data sheet for final power ratings.
 All ratings data based on operation under ISO 8528-1, ISO 3046, DIN6271 conditions using typical fan sizes and drive ratios. Performance tolerance quoted by Pauway is ±5%.
 Prime Power = Power at available load in lieu of main power network. An overload of 10% permitted for one hour in every twelve hours of operation.
 Standby Power = Power available at a variable load in the event of a main power network failure up to a maximum of 500 hours per year. No over load is permitted.
 Rated power factor: 0.80.
 N/A:NOT Available.

Pauway reserves the right to make changes in model, technical specification, color, configuration and accessories without prior notice. Please contact your sales team before ordering.

The generator set is compatible with multiple voltage classes, such as 380V, 415V, 480V, 6.3kV, 10kV, 10.5kV and 13.8kV. Configurations may vary subject to requirements. For detailed technical specifications and customization needs, please contact us or your local authorized agent.

PAUWAY

PWY SERIES

30kVA	4125kVA	50Hz
20kVA	2250kVA	60Hz

Value for Data Center Scenarios

- Zero downtime for servers & critical systems
- Protect data security, avoid business interruption
- Compatible with dual-bus redundancy architecture
- Proven in financial-grade data centers & computing hubs

50
Hz

60
Hz

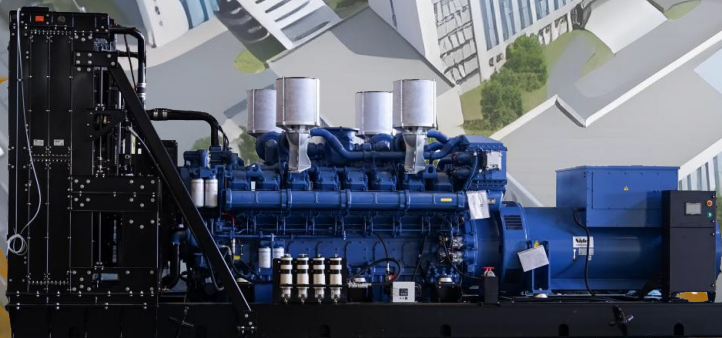
- PAUWAY x YUCHAI: Strategic partnership for high-power data center backup power
- Core partner for YUCHAI's high-power generator integration in the Asia-Pacific
- Co-create premium backup power solutions for mission-critical data centers
- YC4A/4D (80-180kW): Reliable, low fuel consumption, easy maintenance
- YC6T/6TD (350-900kW): Low vibration, low noise, 30% less lubricant consumption
- YC12VC (1500-2000kW): High power reserve, G3 speed regulation, extreme environment adaptability
- YC16VC/16VTD (1800-3000kW): Compact design, emission compliant, for super-large data centers
- $\leq 10s$ rapid load transfer, $\pm 1.5\%$ voltage/frequency stability
- 1500-3000kW high-power range for data center redundancy needs
- Dustproof, shockproof, high-temperature resistant (50°C)
- 24/7 remote monitoring, 500-hour maintenance cycle
- Custom containerized silent design for data center deployment



112*2000kW 10.5kV 50Hz Open Type

Applications :

- Continous & Prime Power : Remote Off-Grid Areas , Industrial Continuous Production , Off-Grid Facilities , Temporary Infrastructure Projects
- Standby Power Applications : Data centers, ICU/operating rooms in Grade A tertiary hospitals, financial exchanges , High-end hotels, large shopping malls, airports/High-speed rail stations , Nuclear power plant security power, LNG terminals, port loading/unloading equipment , Urban drainage pumping stations, emergency command centers, post-disaster rescue sites.



PAUWAY MODEL	POWER				ENGINE BRAND	ENGINE MODEL	ALTERNATOR EVO-TEC	DIMENSION (L*W*H mm)					
	PRP		ESP					OPEN TYPE			STANDARD SOUNDPROOF		
	(KW)	(KVA)	(KW)	(KVA)				L	W	H	L	W	H
PWY22	16	20	18	22	YUCHAI	YC4V35-D20	TCU168E	1500	900	1200	2100	1150	1550
PWY33	24	30	26	33	YUCHAI	YC4V45Z-D20	TCU188D	1550	800	1250	2200	1000	1800
PWY40	30	38	33	41	YUCHAI	YC4V55Z-D20	TCU188DS	1650	800	1350	2200	1000	1800
PWY40Y	30	38	33	41	YUCHAI	YC4D60-D21	TCU188DS	1650	800	1350	2400	1000	1800
PWY55	40	50	44	55	YUCHAI	YCD4V3H6-75	TCU228B	1700	800	1350	2400	1000	1800
PWY63	45	56	50	63	YUCHAI	YC4D80-D34	TCU228C	1800	800	1350	2450	1000	1800
PWY70	50	63	55	69	YUCHAI	YC4D90Z-D21	TCU228C	1800	800	1350	2450	1000	1800
PWY70Y	50	63	55	69	YUCHAI	YC4D90-D34	TCU228C	1900	900	1400	2450	1000	1800
PWY80	60	75	64	80	YUCHAI	YC4A100Z-D20	TCU228E	1900	900	1400	2750	1100	1800
PWY80Y	60	75	66	83	YUCHAI	YC4D105-D34	TCU228E	1900	900	1400	2750	1100	1800
PWY85	64	80	70	88	YUCHAI	YC4A110Z-D20	TCU228F	1900	900	1400	2750	1100	1800
PWY100	70	88	80	100	YUCHAI	YC4D120-D31	TCU228G	2400	1050	1400	3300	1100	1900
PWY110	80	100	90	113	YUCHAI	YC4A140L-D20	TCU228H	2400	1050	1400	3300	1100	1900
PWY110Y	80	100	90	113	YUCHAI	YC4A140-D31	TCU228H	2400	1050	1400	3300	1100	1900
PWY125	90	113	100	125	YUCHAI	YC4A155-D30	TCU228J	2350	1150	1600	3250	1300	2100
PWY125Y	90	113	100	125	YUCHAI	YC4A165-D30	TCU228J	2350	1150	1600	3250	1300	2100
PWY140	100	125	110	138	YUCHAI	YC4A180L-D20	TCU228K	2350	930	1450	3300	1100	1900
PWY150	110	138	120	150	YUCHAI	YC4A190-D30	TCU228L	2500	900	1400	3400	1100	1900
PWY165Q	120	150	130	163	YUCHAI	YCD6Q23H8-210	TCU228M	2500	1000	1500	3700	1200	2150
PWY165	120	150	132	165	YUCHAI	YC6B205L-D20	TCU228M	2500	1000	1500	3700	1200	2150
PWY165Y	120	150	132	165	YUCHAI	YC6A205-D30	TCU228M	2500	1000	1500	3700	1200	2150
PWY190	140	175	150	188	YUCHAI	YC6A230L-D20	TCU288AS	2850	1100	1750	3700	1200	2150
PWY190A	140	175	150	188	YUCHAI	YC6A230-D30	TCU288AS	2850	1100	1750	3700	1200	2150
PWY190Y	140	175	154	193	YUCHAI	YC6A245L-D21	TCU288AS	2850	1100	1750	3700	1200	2150
PWY200	150	188	160	200	YUCHAI	YC6A245-D30	TCU288C	2850	1100	1750	3700	1200	2150
PWY220	160	200	180	225	YUCHAI	YC6A275-D30	TCU288D	2850	1100	1750	3700	1200	2150
PWY220Y	160	200	176	220	YUCHAI	YC6MK285L-D20	TCU288D	2850	1100	1750	3700	1200	2150
PWY225	160	200	180	225	YUCHAI	YCD6Q23H8-260	TCU288D	2850	1100	1750	3700	1200	2150
PWY275	200	250	220	275	YUCHAI	YC6MK350L-D20	TCU288F	2900	1100	1650	4000	1380	2350
PWY275Y	200	250	220	275	YUCHAI	YC6MK350-D30	TCU288F	2850	1100	1750	3700	1200	2150
PWY350	250	313	275	344	YUCHAI	YC6MK420L-D20	TCU288J	2900	1100	1650	4000	1380	2350
PWY350Y	250	313	280	350	YUCHAI	YC6MK420-D30	TCU288J	2900	1100	1650	4000	1380	2350
PWY375	NA	NA	300	375	YUCHAI	YC6MK460L-D20	TCU318B	3150	1250	1800	4350	1380	2250
PWY350M	280	350	NA	NA	YUCHAI	YC6MK450-D30	TCU288L	3000	1200	1750	4250	1380	2350
PWY412	300	375	330	413	YUCHAI	YC6MJ500L-D21	TCU318B	3150	1250	1800	4350	1380	2250
PWY412D	300	375	330	413	YUCHAI	YC6MJ500-D30	TCU318B	3150	1250	1800	4350	1380	2250
PWY412K	300	375	330	413	YUCHAI	YC6K500-D31	TCU318B	3100	1250	1800	4000	1380	2350
PWY425	320	400	340	425	YUCHAI	YC6K520-D30	TCU318C	3150	1250	1800	4350	1380	2250
PWY450	320	400	360	450	YUCHAI	YC6MJ540-D30	TCU318C	3150	1250	1800	4350	1380	2250
PWY500	360	450	400	500	YUCHAI	YC6MJ600-D30	TCU318D	3350	1250	1880	4750	1680	2400
PWY500Y	360	450	NA	NA	YUCHAI	YC6K600-D30	TCU318D	3550	1350	1880	4750	1680	2400
PWY550Y	400	500	440	550	YUCHAI	YC6K660-D30	TCU318E	3550	1350	1880	4750	1680	2400
PWY550	400	500	440	550	YUCHAI	YC6K660-D31	TCU318E	3550	1350	1880	4750	1680	2400
PWY550Y	400	500	440	550	YUCHAI	YC6T660L-D20	TCU318E	3550	1350	1880	4750	1680	2400
PWY625	450	563	500	625	YUCHAI	YC6TD780-D31	TCU368B	3400	1550	2000	4750	1680	2400
PWY688	500	625	550	688	YUCHAI	YC6TD840-D31	TCU368D	3400	1550	2000	5150	2000	2600
PWY688Y	500	625	550	688	YUCHAI	YC6TC840-D31	TCU368D	3400	1550	2000	5150	2000	2600
PWY750Y	550	688	600	750	YUCHAI	YC6TC900-D31	TCU368F	3600	1550	2200	5150	2000	2600
PWY750	550	688	600	750	YUCHAI	YC6TD900-D31	TCU368F	3600	1550	2200	5150	2000	2600
PWY825Y	600	750	660	825	YUCHAI	YC6TD1000-D30	TCU368G	3700	1850	2200	5900	2000	2600
PWY875	NA	NA	700	875	YUCHAI	YC6TD1100-D30	TCU428B	4350	1800	2500	5900	2000	2600
PWY900	650	813	715	894	YUCHAI	YC6TH1070-D31	TCU368H	4350	1700	2250	5900	2000	2600

PAUWAY MODEL	POWER				ENGINE BRAND	ENGINE MODEL	ALTERNATOR EVO-TEC	DIMENSION (L*W*H mm)					
	PRP		ESP					OPEN TYPE			STANDARD SOUNDPROOF		
	(KW)	(KVA)	(KW)	(KVA)				L	W	H	L	W	H
PWY825	600	750	660	825	YUCHAI	YC6C1020D31	TCU368G	3700	1850	2200	ISO 20ft HQ		
PWY888	650	813	710	888	YUCHAI	YC6C1070-D31	TCU428B	4350	1700	2250	ISO 20ft HQ		
PWY1000	730	913	800	1000	YUCHAI	YC6TH1220-D31	TCU428B	4350	1800	2500	ISO 20ft HQ		
PWY1000Y	730	913	800	1000	YUCHAI	YC6C1220-D31	TCU428B	4350	1800	2500	ISO 20ft HQ		
PWY1100Y	800	1000	880	1100	YUCHAI	YC6TH1320-D31	TCU428C	4300	1800	2500	ISO 20ft HQ		
PWY1125	800	1000	900	1125	YUCHAI	YC6C1320-D31	TCU428C	4300	1800	2500	ISO 20ft HQ		
PWY1125Y	800	1000	900	1125	YUCHAI	YC12VTD1350-D31	TCU428C	4400	2500	2500	ISO 40ft HQ		
PWY1250Y	900	1125	1000	1250	YUCHAI	YC6C1520-D31	TCU428C	4400	1900	2500	ISO 20ft HQ		
PWY1250Y	900	1125	1000	1250	YUCHAI	YC12VTD1500-D31	TCU428C	4400	2500	2500	ISO 40ft HQ		
PWY1375	1000	1250	1100	1375	YUCHAI	YC6C1660-D31	TCU428E	4500	2100	2200	ISO 40ft HQ		
PWY1375Y	1000	1250	1100	1375	YUCHAI	YC12VTD1680-D31	TCU428E	4600	2750	2650	ISO 40ft HQ		
PWY1500	1100	1375	1200	1500	YUCHAI	YC12VTD1830-D31	TCU428F	4600	2750	2650	ISO 40ft HQ		
PWY1650Y	1200	1500	1300	1625	YUCHAI	YC12VTD2000-D30	TCU428G	4550	2750	2800	ISO 40ft HQ		
PWY1650	1200	1500	1350	1688	YUCHAI	YC12VC2070-D31	TCU428G	4550	2750	2800	ISO 40ft HQ		
PWY1860Y	1350	1688	1500	1875	YUCHAI	YC12VC2270-D31	TCU468C	6200	2600	2900	ISO 40ft HQ		
PWY1860	1350	1688	1500	1875	YUCHAI	YC16VTD2270-D30	TCU468C	6200	2600	2900	ISO 40ft HQ		
PWY2060Y	1500	1875	1650	2063	YUCHAI	YC12VC2510-D31	TCU468C	6400	2700	3500	ISO 40ft HQ		
PWY2060	1500	1875	1650	2063	YUCHAI	YC16VTD2510-D30	TCU468C	6400	2700	3500	ISO 40ft HQ		
PWY2250	1700	2125	1800	2250	YUCHAI	YC12VC2700-D31	TCU468E	7400	2750	3500	ISO 40ft HQ		
PWY2250	1600	2125	1800	2250	YUCHAI	YC16VTD2700-D30	TCU468E	6600	2700	3500	CUSTOMIZED		
PWY2500Y	1800	2250	2000	2500	YUCHAI	YC12VC3000-D31	TCU468F	7400	2750	3500	ISO 40ft HQ		
PWY2500	1800	2250	2000	2500	YUCHAI	YC20VTD3000-D30	TCU468F	7400	2750	3500	CUSTOMIZED		
PWY2750	2000	2500	2200	2750	YUCHAI	YC16VC3300-D31	TCU468G	7400	2750	3500	CUSTOMIZED		
PWY3000	2200	2750	2400	3000	YUCHAI	YC16VC3600-D31	TCU528B	7600	2750	3500	CUSTOMIZED		
PWY3250	2400	3000	2600	3250	YUCHAI	YC16VC4000-D31	TCU528C	7600	2750	3500	CUSTOMIZED		
PWY3500	2500	3125	2800	3500	YUCHAI	YC16VC4200-D30	TCU568B	8300	3100	3500	CUSTOMIZED		
PWY3750	2700	3375	3000	3750	YUCHAI	YC16VC4500-D30	TCU568B	8300	3100	3500	CUSTOMIZED		
PWY4100	3000	3750	3300	4125	YUCHAI	YC16VC4900-D30	TCU568B	8500	3150	3600	CUSTOMIZED		

Notes:
 All ratings are for guidance only, please refer to the specific genset technical data sheet for final power ratings.
 All ratings data based on operation under ISO 8528-1, ISO 3046, DIN6271 conditions using typical fan sizes and drive ratios. Performance tolerance quoted by Paunway is ±5%.
 Prime Power = Power at available load in lieu of main power network. An overload of 10% permitted for one hour in every twelve hours of operation.
 Standby Power = Power available at a variable load in the event of a main power network failure up to a maximum of 500 hours per year. No over load is permitted.
 Rated power factor: 0.80.
 N/A: NOT Available.

Paunway reserves the right to make changes in model, technical specification, color, configuration and accessories without prior notice. Please contact your sales team before ordering.

The generator set is compatible with multiple voltage classes, such as 380V, 415V, 480V, 6.3kV, 10kV, 10.5kV and 13.8kV. Configurations may vary subject to requirements. For detailed technical specifications and customization needs, please contact us or your local authorized agent.

**PWY
SERIES**

POWER BY YUCHAI | 440V, 1800RPM, 60Hz
 Note: Some high-power models not listed. Contact us for details.

**60
Hz**

PAUWAY MODEL	POWER				ENGINE BRAND	ENGINE MODEL	ALTERNATOR EVO-TEC	DIMENSION (L*W*H mm)					
	PRP		ESP					OPEN TYPE			STANDARD SOUNDPROOF		
	(KW)	(KVA)	(KW)	(KVA)				L	W	H	L	W	H
PWY33-60	24	30	26	33	YUCHAI	YC4V45Z-D21	TCU188CS	1550	800	1250	2200	1000	1800
PWY40-60	30	38	33	41	YUCHAI	YC4V55Z-D21	TCU188DS	1650	800	1350	2200	1000	1800
PWY40D-60	30	38	33	41	YUCHAI	YC4D65-D20	TCU188DS	1800	800	1350	2450	1000	1800
PWY60-60	45	56	50	63	YUCHAI	YC4D80Z-D20	TCU228C	1800	800	1350	2450	1000	1800
PWY75-60	50	63	60	75	YUCHAI	YC4D100Z-D20	TCU228D	1900	900	1400	2750	1100	1800
PWY110-60	80	100	90	113	YUCHAI	YC6B130Z-D20	TCU228G	2500	1000	1500	3700	1200	2150
PWY110D-60	80	100	90	113	YUCHAI	YC4D140-D33	TCU228G	1900	900	1400	2750	1100	1800
PWY125-60	90	113	100	125	YUCHAI	YC6B160Z-D20	TCU228J	2500	1000	1500	3700	1200	2150
PWY125D-60	90	113	100	125	YUCHAI	YC4D155-D33	TCU228J	2400	1050	1400	3300	1100	1900
PWY140-60	100	125	110	138	YUCHAI	YC4D180-D33	TCU228J	2400	1050	1400	3300	1100	1900
PWY165D-60	120	150	132	165	YUCHAI	YC6B210L-D20	TCU228L	2500	1000	1500	3700	1200	2150
PWY165-60	120	150	132	165	YUCHAI	YC4A205-D32	TCU228L	2500	1000	1500	3700	1200	2150
PWY200-60	145	181	160	200	YUCHAI	YC6A245L-D20	TCU288AS	2850	1100	1750	3700	1200	2150
PWY200M-60	150	188	160	200	YUCHAI	YC6MK265L-D20	TCU288AS	2850	1100	1750	3700	1200	2150
PWY200D-60	150	188	160	200	YUCHAI	YC6A245-D32	TCU288AS	2850	1100	1750	3700	1200	2150
PWY220-60	160	200	180	225	YUCHAI	YC6A285-D32	TCU288C	2850	1100	1750	3700	1200	2150
PWY240-60	175	219	190	238	YUCHAI	YC6A305-D32	TCU288D	2850	1100	1750	3700	1200	2150
PWY275-60	200	250	220	275	YUCHAI	YC6MK360L-D20	TCU288F	2900	1100	1650	4000	1380	2350
PWY275D-60	200	250	220	275	YUCHAI	YC6MK360-D30	TCU288F	2900	1100	1650	4000	1380	2350
PWY350-60	250	313	280	350	YUCHAI	YC6MK420L-D21	TCU288H	2900	1100	1650	4000	1380	2350
PWY350D-60	250	313	280	350	YUCHAI	YC6MK420-D31	TCU288H	2900	1100	1650	4000	1380	2350
PWY412-60	300	375	330	413	YUCHAI	YC6MJ515L-D22	TCU288L	2900	1170	1650	4000	1380	2350
PWY412D-60	300	375	330	413	YUCHAI	YC6MK500-D32	TCU288L	2900	1170	1650	4000	1380	2350
PWY550-60	400	500	440	550	YUCHAI	YC6T660L-D21	TCU318E	3550	1350	1880	4750	1680	2400
PWY625-60	450	563	500	625	YUCHAI	YC6TD780-D32	TCU368B	3400	1550	2000	4750	1680	2400
PWY688-60	500	625	550	688	YUCHAI	YC6TD840-D32	TCU368C	3400	1550	2000	5150	2000	2600
PWY750-60	550	688	600	750	YUCHAI	YC6TD940-D32	TCU368D	3600	1550	2200	5150	2000	2600
PWY825-60	600	750	660	825	YUCHAI	YC6TD1020-D32	TCU368F	3700	1850	2200	5900	2000	2600
PWY900-60	650	813	720	900	YUCHAI	YC6TH1070-D33	TCU368G	4350	1700	2250	5900	2000	2600
PWY1000-60	730	913	800	1000	YUCHAI	YC6TH1220-D33	TCU428B	4350	1800	2500			ISO 20ft HQ
PWY1100-60	800	1000	900	1125	YUCHAI	YC6TH1350-D33	TCU428B	4300	1800	2500			ISO 20ft HQ
PWY1100D-60	800	1000	900	1125	YUCHAI	YC12VTD1350-D32	TCU428B	4550	2750	2800			ISO 40ft HQ
PWY1250-60	900	1125	1000	1250	YUCHAI	YC12VTD1500-D32	TCU428D	4550	2750	2800			ISO 40ft HQ
PWY1375-60	1000	1250	1100	1375	YUCHAI	YC12VTD1680-D32	TCU428D	4550	2750	2800			ISO 40ft HQ
PWY1500-60	1100	1375	1200	1500	YUCHAI	YC12VTD1860-D32	TCU428E	4550	2750	2650			ISO 40ft HQ
PWY1650-60	1200	1500	1300	1625	YUCHAI	YC12VTD2070-D32	TCU428F	4600	2750	2800			ISO 40ft HQ
PWY1650D-60	1200	1500	1300	1625	YUCHAI	YC12VC2170-D33	TCU428F	4600	2750	2800			ISO 40ft HQ
PWY1875-60	1350	1688	1500	1875	YUCHAI	YC16VTD2270-D32	TCU468B	6200	2600	2900			ISO 40ft HQ
PWY2060-60	1500	1875	1650	2063	YUCHAI	YC16VTD2510-D32	TCU468C	6400	2700	3500			ISO 40ft HQ
PWY2250-60	1600	2000	1800	2250	YUCHAI	YC16VTD2700-D32	TCU468C	6500	2700	3500			ISO 40ft HQ
PWY2500-60	1800	2250	2000	2500	YUCHAI	YC20VTD3000-D32	TCU468E	6600	2700	3500			ISO 40ft HQ

Generator
PAUWAY 博威

**PERFORMANCE
STABILITY**



PWY2750
DCP2000KW
10.5KV/50HZ
 Designed For AIDC

GAS GENERATOR

FOCUS ON THE **TOTAL LIFE CYCLE**
INPUT-OUTPUT RATIO



- Leading provider of clean energy and biomass energy solutions. Partnership with Germany's MWM began in 2017, manufacturing and supplying gas generator sets. Powered by German industrial manufacturing expertise, we deliver gas generator sets and CHP/CCHP solutions.
- Founded in 1871 by Carl Benz, MWM (Mannheim) now operates as Caterpillar Energy Solutions. With nearly 150 years of experience, it specializes in developing and optimizing gas engines and generators for natural gas, biogas and other special gases.

▶ TOP SUBJECTS

APG **BIOGAS** **TCG 3020** ASSOCIATED PETROLEUM GAS **TCG 3016** **GAS ENGINE OIL** **HYDROGEN POWER**
CHP PLANT **COAL MINE GAS** **COGENERATION** **COMBINED HEAT AND COOL** **MWM RAM** **GAS**
TPM GAS CONTAINING HYDROGEN **GAS ENGINES** **COOLANT** **GENSETS** **DIGITAL** GREENHOUSES **SPARE PARTS**
FROST PROTECTION **25H2-KITS** LANDFILL GAS **NATURAL GAS** **GENERATOR SETS** WASTEWATER TREATMENT PLANT
INDUSTRY 4.0 **MWM PREMIUM ANTIFREEZE -20** **PUBLIC UTILITIES** **SEWAGE GAS** **JOBS & CAREER**

Performance Data – MWM Gas Engine TCG 3016

Natural Gas Applications, NOX ≤ 500 mg/Nm3*

Engine type	TCG 3016 V08 P = Optimized for high electrical efficiency		TCG 3016 V12 P = Optimized for high electrical efficiency		TCG 3016 V16 P = Optimized for high electrical efficiency		
	50 Hz	60 Hz	50 Hz	60 Hz	50 Hz	60 Hz	
Electrical output	kW	400	400	600	600	800	800
Medium effective pressure	bar	18.9	15.9	18.9	15.7	18.8	15.7
Thermal output ± 8%	kW	404	428	617	644	821	856
Electrical efficiency**	%	43.1	42.1	43.4	42.4	43.6	42.6
Thermal efficiency**	%	43.6	45	44.6	45.7	44.6	45.5
Overall efficiency	%	86.7	87.1	88	88.1	88.2	88.1
Power to heat ratio ***		0.99	0.94	0.97	0.93	0.98	0.94

* With 5% O2 and dry exhaust gas

** according to ISO 3046-1

*** The power to heat ratio is calculated by dividing the electrical efficiency by the thermal efficiency. Please remember that this is a theoretical value that may deviate from actually measured values.

The values given in this table are information purposes only and not binding. The information given in the offer is decisive. Other unit variants with other generators are available.

Natural Gas Applications with 25 vol% Hydrogen (NOX ≤ 500 mg/Nm3* / 1.0 g/bhph*)

Engine type	TCG 3016 V08 P+ High Efficiency plus 25H2-Kit = Optimized for high electrical efficiency with 25 Vol.-% Hydrogen Kit		TCG 3016 V12 P+ High Efficiency plus 25H2-Kit = Optimized for high electrical efficiency with 25 Vol.-% Hydrogen Kit		
	50 Hz	60 Hz	50 Hz	60 Hz	
Electrical output	kW	400	400	600	600
Thermal output ± 8%	kW	403	423	614	637
Electrical efficiency**	%	42.8	41.9	43	42.4
Thermal efficiency**	%	43.1	44.4	44.1	45
Total efficiency	%	85.9	86.3	87.1	87.4
Power to heat ratio ***		0.99	0.94	0.98	0.94

Engine type	TCG 3016 V16 P+ High Efficiency plus 25H2-Kit = Optimized for high electrical efficiency with 25 Vol.-% Hydrogen Kit		TCG 3016 V16 S+ High Density plus 25H2-Kit = Increased power density with 25 Vol.-% Hydrogen Kit	
	50 Hz	60 Hz	50 Hz	60 Hz
Electrical output	kW	800	800	1,000
Thermal output ± 8%	kW	816	848	1,092
Electrical efficiency**	%	43.3	42.2	41.5
Thermal efficiency**	%	44.2	45.1	45.7
Total efficiency	%	87.5	87.3	87.2
Power to heat ratio ***		0.98	0.94	0.91

* for 5 % O2 and dry exhaust gas

** according to ISO 3046-1

*** The power to heat ratio is calculated by dividing the electrical efficiency by the thermal efficiency. Please remember that this is a theoretical value that may deviate from actually measured values.

The values given in this table are information purposes only and not binding. The information given in the offer is decisive. Other unit variants with other generators are available.

Biogas, Landfill Gas, and Sewage Gas Applications, NOX ≤ 500 mg/Nm3 *

Engine type	TCG 3016 V08 X = Optimized for operation with all biogas		TCG 3016 V12 X = Optimized for operation with all biogas		TCG 3016 V16 X = Optimized for operation with all biogas		
	50 Hz	60 Hz	50 Hz	60 Hz	50 Hz	60 Hz	
Electrical output	kW	400	400	600	600	800	800
Medium effective pressure	bar	18.9	15.8	18.9	15.8	18.8	15.7
Thermal output ± 8%	kW	394	416	598	627	790	827
Electrical efficiency**	%	42.8	41.7	42.9	41.7	43.2	41.9
Thermal efficiency**	%	42.2	43.3	42.8	43.6	42.7	43.3
Overall efficiency	%	85	85	85.7	85.3	85.9	85.2
Power to heat ratio***		1.01	0.97	1	0.96	1.01	0.97

* With 5% O2 and dry exhaust gas

** according to ISO 3046-1

*** The power to heat ratio is calculated by dividing the electrical efficiency by the thermal efficiency. Please remember that this is a theoretical value that may deviate from actually measured values.

The values given in this table are information purposes only and not binding. The information given in the offer is decisive. Other unit variants with other generators are available.

Natural Gas Applications with 25 vol% Hydrogen (NOX ≤ 500 mg/Nm3* / 1.0 g/bhph*)

Dimensions and Weights

Engine type	TCG 3016 V08		TCG 3016 V12		TCG 3016 V16		
	50 Hz	60 Hz	50 Hz	60 Hz	50 Hz	60 Hz	
Bore / stroke	mm	132/160	132/160	132/160	132/160	132/160	
Displacement	dm3	17.5	17.5	26.3	26.3	35	35
Speed	min-1	1,500	1,800	1,500	1,800	1,500	1,800
Mean piston speed	m/s	8	9.6	8	9.6	8	9.6
Length	mm	3,100	3,100	3,830	3,830	4,200	4,200
Width	mm	1,780	1,780	1,780	1,780	1,780	1,780
Height	mm	2,150	2,150	2,150	2,150	2,150	2,150
Dry weight genset	kg	5,720	5,720	7,000	7,000	8,070	7,700

The values given in this table are information purposes only and not binding. The information given in the offer is decisive. Other unit variants with other generators are available.

Service Intervals

	First service (check valve clearance) *	Spark plug change	Cylinder head inspection	General overhaul
Natural gas	2,000 Oh ***	4,000 Oh	40,000 Oh **	80,000 Oh
Purified biogas, landfill gas, and sewage gas	2,000 Oh ***	4,000 Oh	32,000 Oh **	64,000 Oh
Unpurified biogas, landfill gas, and sewage gas	1,500 Oh	3,000 Oh	24,000 Oh **	48,000 Oh

* "after commissioning (E10)"

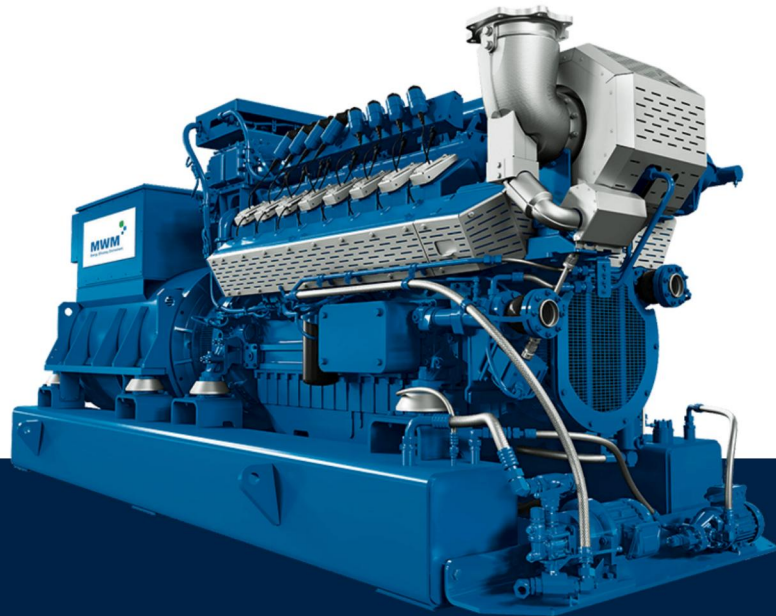
** "at the latest"

*** "gas quality High and Medium"

The values given in this table are information purposes only and not binding. The information given in the offer is decisive. Other unit variants with other generators are available.

500kVA	1250kVA	50Hz
500kVA	1000kVA	60Hz

▶ **TCG 3016**
V16 1MW



New development – greatly reduced operating and installation costs and fully digitized power plant control.

- Output range from 400 kWel to 1,000 kWel
- Low gas consumption, flexible use of fuel, suitable for all gas types including hydrogen admixtures of up to 25 vol%
- Greatly reduced installation and operating costs

The New One. Robust. Efficient. Digital.

- Output range from 400 kWel to 1,000 kWel
- Optimum efficiency: electrical efficiency up to 43 percent
- Low gas consumption, flexible use of fuel, suitable for all gas types: natural gas, biogas, landfill gas, sewage gas, mine gas, hydrogen admixtures and other gases
- MWM retrofit kits available in two editions for conversion for operation with hydrogen admixture of up to 20 vol% and up to 25 vol%
- Greatly reduced installation and operating costs
- Higher reliability and availability through improved robustness
- Low maintenance costs due to longer maintenance intervals
- Very low lubricant consumption and operator-friendly oil management
- The TCG 3016 V16 (S = High density) is specifically optimized for the 1 MWel capacity range, with high stress tolerance for optimum availability, and long useful life

Description – MWM Gas Engine TCG 3016

High Efficiency, Low Operating Costs

- Highest efficiency in its output class through unique combination of long maintenance intervals (80,000 operating hours for natural gas) and high efficiency (electrical efficiency up to 43.5 percent)
- The only gas engine on the market that combines efficiency with robustness to such a high degree
- Thanks to the optimized combustion, the electrical efficiency has been improved, and the vibration and stress that many components are exposed to has been reduced significantly.

Reduced Installation and Building Costs

- Smaller setup area than for comparable gensets thanks to compact design and integrated tanks for daily refilling
- Due to the flanged genset concept, the vibration decoupling takes place directly between the gas engine and the base frame, so that the setup costs are lower than for other gas engines.
- Reduced investment costs thanks to expanded product scope and new digital power plant control TPEM (Total Plant & Energy Management)
- Thanks to the optimized new combustion chamber geometry, higher mixture circuit temperatures reduce the dry cooler investment costs and ensure steadier combustion.
- Further benefits and technological improvements: Water-cooled turbo charger, flanged genset concept, optimized flow control of the fuel gas mix and optimized oil management of the gas engine

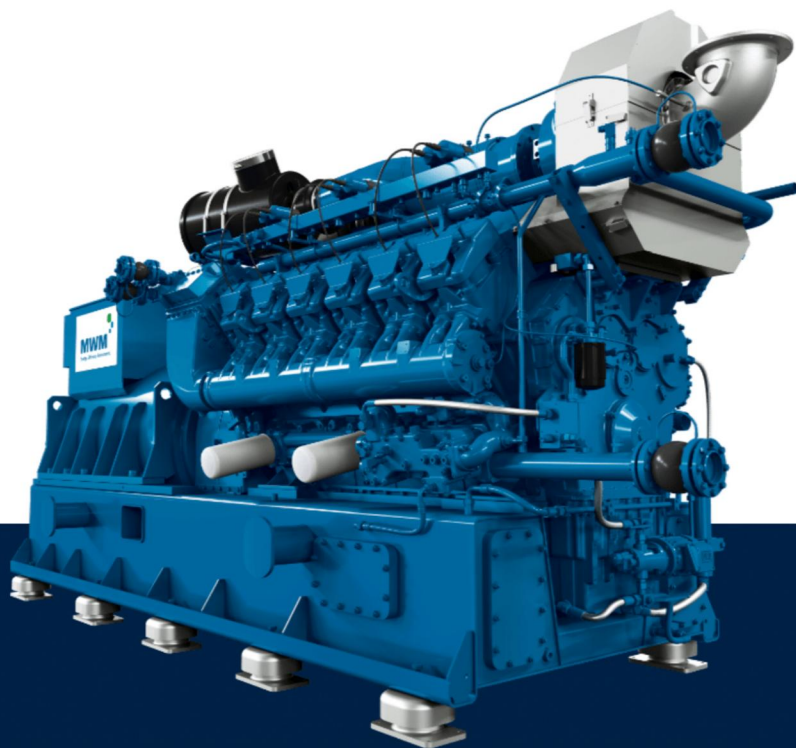
Optimized Lubricant Management

- Greatly reduced oil consumption of 0.1 g/kWhel. Thus, the TCG 3016 gas engine boasts the lowest lubricant consumption in its class.
- Longer oil change intervals through innovative, leading-edge lubricant management
- Lubricant change intervals of up to 4,000 operating hours for natural gas and biogas (high and medium gas quality)*
- Up to 66 percent lower lubricant consumption compared to competitors

1250kVA	1950kVA	50Hz
1406kVA	1950kVA	60Hz

TCG 2020

V12



Best electrical and thermal efficiency in its class. All gas types: natural gas, biogas, mine gas, landfill gas, sewage gas.

- Output range from 1,000 to 1,560 kWel
- Best electrical and thermal efficiency in its output class
- Runs on all gas types

For the Highest Ratings in Ecology and Economy!

- Output range from 1,000 to 1,560 kWel
- Best electrical and thermal efficiency in its output class
- Runs on all gas types: natural gas, biogas, landfill gas, sewage gas, mine gas, etc.
- Low operating costs
- TCG 2020 is mainly used for CHP plants in Europe and for biogas worldwide
- The TCG 2020 V12 in the configuration RW (natural gas) and XW (biogas) is specifically optimized for the 1 MWe capacity range, with even lower operating and maintenance costs
- TCG 2020 K was especially adapted to non-ISO conditions such as high altitudes or high intake air temperatures in the field of natural gas
- For the Asia-Pacific/Bangladesh region, the MWM TCG 2020 V16 K is available with 1,415 kWel.
- More than 2000 power generators with approximately 2,800,000 kWel already installed around the globe

Description – MWM Gas Engine TCG 2020 /TCG 2020K

TCG 2020 – High Profitability Thanks to High Efficiency

- Improvements of the intake duct and spark plug provide higher efficiency compared to predecessor model
- Miller valve control times increase genset efficiency

TCG 2020 V12 in the Configuration RW (Natural Gas) and XW (Biogas) – Increased Efficiency and Extended Useful Life in the 1 MWe Capacity Range

- For all natural gas and biogas applications in countries with 50 Hz networks
- Longer maintenance intervals for all natural gas applications extend useful life by two years
- Optimized electrical efficiency of 43 percent (under ISO conditions) for natural gas applications
- Optimized lubricant management
- Lower internal consumption through higher mixture cooler temperatures for natural gas applications

TCG 2020 K – Optimized for Isolated Operation and Non-ISO Conditions

- Load response in only seven steps
- Fast and reliable supply in the event of grid failures or in isolated operation
- Special 1,000 kWel variant available for high altitude setup and different intake air temperatures

Higher Efficiency and Lower Pollutant Emissions

- Smaller dead spaces in combustion chamber ensure more complete combustion
- Reduced fuel consumption and CO and HC emissions
- This enables gas savings of up to 15 percent a year and increases the profitability of the plant

Higher Efficiency and Long Maintenance Intervals

- Effective crankcase ventilation increases efficiency by utilizing the returned combustible blow-by gas
- Optimized blow-by return and improved separation of the gas phase and liquid phase enable longer maintenance intervals for the turbocharger thanks to the clean intake air

K Editions: Maximum Output at Low Costs

- Improved output capacity of TCG 2020 K under non-ISO conditions and excellent load response through optimum turbocharger design with broad performance map
- For the Asia-Pacific/Bangladesh region, the MWM TCG 2020 V16 K with 1,415 kWel can optimally meet the high local requirements.
- New turbocharger TCR 16 for TCG 2020 with water-cooled bearing housing eliminates need for separate maintenance stages for the turbocharger
- Low turbocharger maintenance costs lead to lower life cycle costs for gas engines/electricity gensets.

Performance Data – MWM Gas Engine TCG 2020

Natural gas applications, NO_x ≤ 500 mg/Nm³ *

Engine type		TCG 2020 V12 RW = Optimized for high total efficiency at requested power		TCG 2020 V12 K K = Optimized for robustness and low CAPEX		TCG 2020 V12 R = Optimized for high total efficiency	
		50 Hz	60 Hz	50 Hz	60 Hz	50 Hz	60 Hz
Electrical output	kW	1,000	1,125	1,125	1,200	1,200	
Thermal output ± 8%	kW	1,066	1,267	1,274	1,189	1,196	
Electrical efficiency**	%	43	40.7	40.4	43.7	43.4	
Thermal efficiency**	%	45.4	45.8	45.8	43.3	43.2	
Total efficiency	%	88.4	86.6	86.2	87	86.6	
Power to heat ratio***		0.95	0.9	0.89	1	1	

Engine type		TCG 2020 V16 K K = Optimized for robustness and low CAPEX		TCG 2020 V16 R = Optimized for high total efficiency	
		50 Hz	60 Hz	50 Hz	60 Hz
Electrical output	kW	1,500	1,500	1,560	1,560
Thermal output ± 8%	kW	1,688	1,703	1,576	1,589
Electrical efficiency**	%	40.8	40.4	43.3	43
Thermal efficiency**	%	45.9	45.9	43.8	43.8
Total efficiency	%	86.7	86.3	87.1	86.8
Power to heat ratio***		0.89	0.89	0.99	0.98

* With 5% O₂ and dry exhaust gas

** According to ISO 3046-1

*** The power to heat ratio is calculated by dividing the electrical efficiency by the thermal efficiency. Please remember that this is a theoretical value that may deviate from actually measured values.

The values given in these tables are information purposes only and not binding. The information given in the offer is decisive. Other unit variants with other generators are available.

Biogas, Landfill Gas, and Sewage Gas Applications, NO_x ≤ 500 mg/Nm³ *

Engine type		TCG 2020 V12 XW = Optimized for operation with biogases at requested power		TCG 2020 V12 X = Optimized for operation with biogases		TCG 2020 V16 X = Optimized for operation with biogases	
		50 Hz	60 Hz	50 Hz	60 Hz	50 Hz	60 Hz
Electrical output	kW	1,000	1,200	1,200	1,560	1,560	
Thermal output ± 8%	kW	1,035	1,192	1,201	1,566	1,580	
Electrical efficiency**	%	42.6	43	42.7	42.7	42.3	
Thermal efficiency**	%	44.1	42.7	42.7	42.9	42.8	
Total efficiency	%	86.7	85.7	85.4	85.6	85.1	
Power to heat ratio***		0.97	1	1	1	0.99	

* With 5% O₂ and dry exhaust gas

** According to ISO 3046-1

*** The power to heat ratio is calculated by dividing the electrical efficiency by the thermal efficiency. Please remember that this is a theoretical value that may deviate from actually measured values.

The values given in these tables are information purposes only and not binding. The information given in the offer is decisive. Other unit variants with other generators are available.

Dimensions and Weights

Engine type		TCG 2020 V12 RW = Optimized for high total efficiency at requested power XW = Optimized for operation with biogases at requested power		TCG 2020 V12 K K = Optimized for robustness and low CAPEX		TCG 2020 V12 R = Optimized for high total efficiency X = Optimized for operation with biogases		TCG 2020 V16 K K = Optimized for robustness and low CAPEX		TCG 2020 V16 R = Optimized for high total efficiency X = Optimized for operation with biogases	
		50 Hz	60 Hz	50 Hz	60 Hz	50 Hz	60 Hz	50 Hz	60 Hz	50 Hz	60 Hz
Length	mm	4,660	4,790	5,970	4,790	5,970	5,430	6,640	5,430	6,640	
Width	mm	1,810	1,810	1,790	1,810	1,790	1,810	1,790	1,810	1,790	
Height	mm	2,210	2,210	2,210	2,210	2,210	2,210	2,210	2,210	2,210	
Dry weight genset	kg	11,200	11,700	13,000	11,700	13,000	13,300	14,900	13,300	14,900	
Bore / stroke	mm	170/195	170/195	170/195	170/195	170/195	170/195	170/195	170/195	170/195	
Displacement	dm ³	53.1	53.1	53.1	53.1	53.1	70.8	70.8	70.8	70.8	
Speed	min ⁻¹	1,500	1,500	1,500	1,500	1,500	1,500	1,500	1,500	1,500	
Mean piston speed	m/s	9.8	9.8	9.8	9.8	9.8	9.8	9.8	9.8	9.8	

The values given in these tables are information purposes only and not binding. The information given in the offer is decisive. Other unit variants with other generators are available.

Service Intervals

TCG 2020 V12, V16, V12 K, V16	First service (check valve clearance)*	Cylinder head inspection	Major overhaul
Natural gas, purified biogas, sewage gas, and landfill gas	4,000 oh	32,000 oh**	64,000 oh
Unpurified biogas, sewage gas, and landfill gas	2,000 oh	16,000 oh**	64,000 oh

TCG 2020 V12	First service (check valve clearance)	Cylinder head inspection	Major overhaul
Natural gas	4,000 oh	40,000 oh**	80,000 oh
Purified biogas, sewage gas, and landfill gas	4,000 oh	32,000 oh**	64,000 oh
Unpurified biogas, sewage gas, and landfill gas	2,000 oh	16,000 oh**	64,000 oh

* "after commissioning (E10)"

** "at the latest"

The values given in these tables are information purposes only and not binding. The information given in the offer is decisive. Other unit variants with other generators are available.

Performance Data 1 – MWM Gas Engine TCG 3020

Natural Gas Applications, NOx ≤ 500 mg/Nm3 *

Engine type		TCG 3020 V12	TCG 3020 V12	TCG 3020 V16	TCG 3020 V16	TCG 3020 V20	TCG 3020 V20	TCG 3020 V20	TCG 3020 V20	TCG 3020 V20	TCG 3020 V20		
		P = Optimized for high electrical efficiency	R = Optimized for high total efficiency	P = Optimized for high electrical efficiency	R = Optimized for high total efficiency	P = Optimized for high electrical efficiency	R = Optimized for high total efficiency	R = Optimized for high total efficiency	PV = Optimized for high efficiency for requested power	RV = Optimized for high response for requested power	RV = Optimized for high response for requested power	RV = Optimized for high response for requested power	
		50 Hz	50 Hz	50 Hz	50 Hz	50 Hz	60 Hz	50 Hz	60 Hz	50 Hz	60 Hz	50 Hz	60 Hz
Electrical output	kW	1,380	1,380	1,840	1,840	2,300	2,300	2,300	2,300	2,000	2,000	2,000	2,000
Electrical efficiency**	%	45	44	44.7	44	45	44.4	44	43.7	44.4	43.9	43.7	43.4
Thermal Output	kW									1,949	1,982	2,026	2,038
Thermal efficiency**	%	42.3	43.6	42.6	43.6	42.3	42.5	43.6	43.6	43.3	43.6	44.2	44.2
Overall efficiency	%	87.3	87.6	87.3	87.6	87.3	86.9	87.6	87.3	87.7	87.4	87.9	87.6
Power to heat ratio***		1.06	1.01	1.05	1.01	1.06	1.04	1.01	1.01	1.02	1.01	0.99	0.98

* With 5% O2 and dry exhaust gas

** According to ISO 3046-1

*** The power to heat ratio is calculated by dividing the electrical efficiency by the thermal efficiency. Please remember that this is a theoretical value that may deviate from actually measured values.

The values given in these tables are information purposes only and not binding. The information given in the offer is decisive. Other unit variants with other generators are available.

Natural Gas Applications, NOx ≤ 250 mg/Nm3 *

Engine type		TCG 3020 V12	TCG 3020 V12	TCG 3020 V16	TCG 3020 V16	TCG 3020 V20	TCG 3020 V20	TCG 3020 V20	TCG 3020 V20	TCG 3020 V20	TCG 3020 V20		
		P = Optimized for high electrical efficiency	R = Optimized for high total efficiency	P = Optimized for high electrical efficiency	R = Optimized for high total efficiency	P = Optimized for high electrical efficiency	R = Optimized for high total efficiency	R = Optimized for high total efficiency	PV = Optimized for high efficiency for requested power	RV = Optimized for high response for requested power	RV = Optimized for high response for requested power	RV = Optimized for high response for requested power	
		50 Hz	50 Hz	50 Hz	50 Hz	50 Hz	60 Hz	50 Hz	60 Hz	50 Hz	60 Hz	50 Hz	60 Hz
Electrical output	kW	1,380	1,380	1,840	1,840	2,300	2,300	2,300	2,300	2,000	2,000	2,000	2,000
Electrical efficiency**	%	43.9	42.9	43.6	42.9	44	43.5	42.9	42.6	43.4	42.9	42.6	42.3
Thermal output	kW									2,031	2,065	2,123	2,136
Thermal efficiency**	%	43.2	44.5	43.5	44.5	43.1	43.3	44.6	44.6	44.1	44.3	45.2	45.2
Overall efficiency	%	87	87	87	87	87	87	88	87	88	87	88	88
Power to heat ratio***		1.02	0.96	1	0.96	1.02	1	0.96	0.96	0.98	0.97	0.94	0.94

* With 5% O2 and dry exhaust gas

** According to ISO 3046-1

*** The power to heat ratio is calculated by dividing the electrical efficiency by the thermal efficiency. Please remember that this is a theoretical value that may deviate from actually measured values.

The values given in these tables are information purposes only and not binding. The information given in the offer is decisive. Other unit variants with other generators are available.

Natural Gas Applications with 25 vol% Hydrogen (NO X ≤ 500 mg/Nm3* / 1.0 g/bhph *)

Engine type		TCG 3020 V12	TCG 3020 V12	TCG 3020 V16	TCG 3020 V16	TCG 3020 V20	TCG 3020 V20	TCG 3020 V20	TCG 3020 V20	TCG 3020 V20
		P+ High Efficiency plus 25H2-Kit = Optimized for high electrical efficiency with 25 vol.% hydrogen kit	R+ High Response plus 25H2-Kit = Optimized for high total efficiency with 25 vol.% hydrogen kit	P+ High Efficiency plus 25H2-Kit = Optimized for high electrical efficiency with 25 vol.% hydrogen kit	R+ High Response plus 25H2-Kit = Optimized for high total efficiency with 25 vol.% hydrogen kit	P+ High Efficiency plus 25H2-Kit = Optimized for high electrical efficiency with 25 vol.% hydrogen kit	R+ High Response plus 25H2-Kit = Optimized for high total efficiency with 25 vol.% hydrogen kit	P+ High Efficiency plus 25H2-Kit = Optimized for high electrical efficiency with 25 vol.% hydrogen kit	R+ High Response plus 25H2-Kit = Optimized for high total efficiency with 25 vol.% hydrogen kit	PV+ High Efficiency for Requested Power plus 25H2-Kit = Optimized for high electrical efficiency at requested power with 25 vol.% hydrogen kit
Electrical power**	kW	1,380	1,380	1,840	1,840	2,300	2,300	2,300	2,000	2,000
Electrical efficiency	%	44.6	43.9	44.6	43.6	44.6	43.6	43.6	44	43.3
Thermal efficiency (±8 %)	%	42.5	43.6	42.6	43.9	42.6	43.9	43.9	43.6	44.6
Total efficiency	%	87.1	87.5	87.2	87.5	87.2	87.5	87.5	87.6	87.9
Power to heat ratio ***		1.05	1	1.05	0.99	1.05	0.99	0.99	1.01	0.97

* for 5 % O2 and dry exhaust gas

** according to ISO 8528-1

*** The power to heat ratio is calculated by dividing the electrical efficiency by the thermal efficiency. Please remember that this is a theoretical value that may deviate from actually measured values.

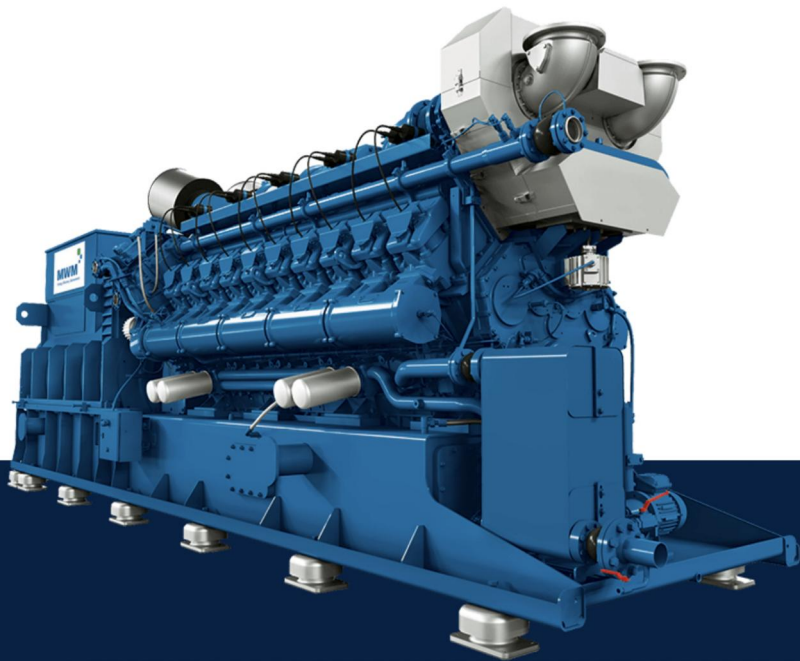
The values given in this table are information purposes only and not binding. The information given in the offer is decisive. Other unit variants with other generators are available.

PAUWAY

3020 SERIES



TCG 3020 V20



The All-Round Talent. Smart, secure plant control. Higher output and profitability despite compact design.

- Output: 1,380 – 2,300 kWel
- Electrical efficiency of up to 45 percent (natural gas) and 43.6 percent (biogas)
- Very low oil consumption, high efficiency
- Low maintenance costs due to long service intervals
- Designed for natural gas operation with hydrogen admixture of up to 25 vol%
- Available as 50 Hz variant (V12, V16, V20) and as 60 Hz variant (V20)

MWM TCG 3020 Gas Engine: The All-Round Talent.

Flexible Use. Flexible Operation.

- Output: 1,380 – 2,300 kWel
- Flexible use for various applications and gas types, such as natural gas, biogas, APG, and propane gas, hydrogen admixtures, and other gases
- MWM 25H2-Kit available for conversion for operation with hydrogen admixture of up to 25 vol%
- Electrical efficiency of up to 45 percent (natural gas)/43.6 percent (biogas)
- High reliability and efficiency
- Low maintenance costs thanks to long service intervals of up to 80,000 hours until the general overhaul
- Series with low operating costs
- Very low oil consumption, high efficiency
- High economic efficiency and availability thanks to digital control system TPEM (Total Plant & Energy Management)
- In the Z configuration, the TCG 3020 V20 is optimized for operation with propane, enabling the engine to deliver the best possible performance.
- The TCG 3020 V20 is available as 50 Hz variant or as 60 Hz variant (also for Z configuration).

Description – MWM Gas Engine TCG 3020

Higher Efficiency and Performance

- Compared to the predecessor model, the TCG 3020 features the same size, a more compact design, and up to 18 percent more output.
- State-of-the-art technologies enable an output of 1,380 to 2,300 kWel and application-optimized engine types
- High electrical efficiency of up to 45 percent (natural gas)/43.6 percent (biogas), total efficiency of more than 87 percent (natural gas)/86 percent (biogas)
- Flexible use for various applications and gas types, such as natural gas, biogas, APG, and propane gas, hydrogen admixtures, and other gases

New Engine Including TPEM Plant Control

- MWM hardware and software from the same manufacturer for comprehensive plant control
- Data analysis and optimum plant control combined in a single system
- Integrated secure remote maintenance solutions that are always available
- Full plant performance with maximum availability and reliability

Improved Economic Efficiency

- Long service intervals with up to 80,000 operating hours until the next general overhaul (if the gas quality is high)
- Low installation and operating costs through high performance and low oil consumption of only 0.15 g/kWhe1

TCG 3020 V20 in Z Configuration: High-Performance Propane Operation

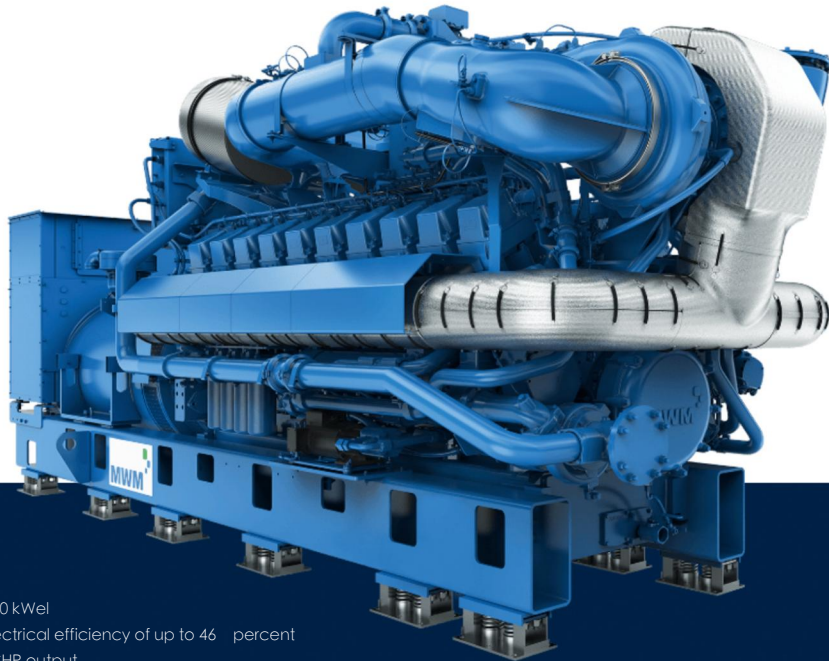
- The tried and tested TCG 3020 series has been supplemented with a new variant. In the Z configuration, the MWM TCG 3020 V20 gas engine runs on propane; in this way, the engine delivers a high performance density even at high altitudes. To ensure high quality and availability of the plant, the TCG 3020 V20 Z has undergone an extensive test cycle. The genset is available for parallel operation with the most important grid codes and for island-mode operation with improved load response. Moreover, the engine allows for alternate operation with natural gas.

4170 SERIES

Made to perform. Achieve your energy goals even faster and more cost-effectively—whether in grid-parallel or island-mode operation, under difficult installation conditions, changing load requirements, or high ambient temperatures.

TCG 4170

V20



- Output: 2,500 kWel
- Excellent electrical efficiency of up to 46 percent at optimal CHP output
- Full power in under five minutes and maximum load step performance of 60 percent
- New TCS control system available in various configurations
- Location-independent 24/7 digital plant monitoring
- High fuel flexibility, designed for natural gas, propane gas, hydrogen blends, and other types of gas
- Currently available as 50-Hz variant (60-Hz variant will be available in 2026)

Performance Data – MWM Gas Engine TCG 4170

Natural gas applications, NOx ≤ 500 mg/Nm3*

Type		TCG 4170 V20 50 Hz R = High Response		
Electrical output	kW	2,536	Bore/stroke	mm 170
Electrical efficiency	%	Up to 46.0	Displacement	dm3 97.6
Thermal efficiency **	%	48.1	Speed	min-1 1,600
Total efficiency	%	89.1	Length	mm 6,383
Power-to-heat ratio **		1.07	Width	mm 2,482
			Height	mm 2,584
			Dry weight genset	kg 20,500

* At 5 percent O2 and dry exhaust gas, according to ISO 8528-1 at U = 0.4 kV, cos phi = 1.0 at 50 Hz, methane number of MN 80. Exhaust gas cooled to 120°
 ** According to ISO 3046-1
 *** The power-to-heat ratio is calculated by dividing the electrical efficiency by the thermal efficiency. Please remember that this is a theoretical value that may deviate from actually measured values.
 The data in this chart are for information only and are not binding. The information given in the offer is authoritative. Further generator set variants are available with different generators.

The data in this chart are for information only and are not binding. The information given in the offer is authoritative. Further generator set variants are available with different generators.

Robust. Smart. Highly Efficient.

- Output: 2,500 kWel
- Cutting-edge electrical efficiency of up to 46 percent
- Flexible use for various applications and gas types, such as natural gas, propane gas, hydrogen blends, and other gases
- New TCS control system available in various configurations and as customized solutions
- Fast ramp-up and full power in less than five minutes
- Full power at intake air temperatures of up to 45 °C
- High robustness thanks to proven components, for maximum reliability
- Low lifecycle costs thanks to reduced maintenance times and long service intervals
- Easy maintenance and low oil consumption of ≤ 0.122 g/kWh

Description – MWM Gas Engine TCG 2020 /TCG 2020K

Maximum Electrical Efficiency and Flexibility

- The TCG 4170 V20 R impresses with its high electrical efficiency of up to 46 percent.
- With an electrical power range of 2,500 kW (up to 2,536 kW with natural gas), the engine is suitable for energy generation in companies in various industries.
- The overall efficiency of the TCG 4170 V20 is 89.1 percent or even up to 89.6 percent when the engine coolant temperature is 88 °C
- 100 percent output in two steps and intake air temperatures of up to 45 °C make the TCG 4170 V20 ideal for demanding locations.

Optimum Efficiency and Profitability

- High profitability: The low operating costs of the TCG 4170 V20 reduce the total cost of ownership.
- Real-time monitoring with VisionLink ® and the TCS control system ensure optimum plant management.
- Maintenance-friendly design with up to 80,000 operating hours until the next general overhaul (if the gas quality is high)
- TCG 4170 V20 spark plug service life 5,000 to 10,000 hours
- 2,000 hours until the next oil change interval (4,000 hours with synthetic oil)
- Low lifecycle costs and low oil consumption of ≤ 0.122g/kWh

Suitable for Numerous Gas Types and Applications

- Maximum operating efficiency and high fuel flexibility, designed for natural gas, propane gas, hydrogen blends, and other types of gas
- Ideal for reliable power generation in numerous industries and segments, including utilities, independent power producers (IPPs), critical infrastructure, food processing, greenhouse facilities, data centers, refineries and petrochemical plants, mining and metallurgical plants, and manufacturing facilities.
- The TCG 4170 V20 is available as 50-Hz variant (60-Hz variant will be available in 2026)

Performance Data 2 – MWM Gas Engine TCG 3020

Propane gas applications, NO_x ≤ 250 mg/Nm³*

		TCG 3020 V20 Z = Optimized for operation with propane gas	
Engine type		50 Hz	60 Hz
Electrical output	kW	1,880 *	1,880 *
Electrical efficiency**	%	41.8	41.5
Thermal output	kW	2,063	2,078
Thermal efficiency**	%	45.9	45.8
Overall efficiency	%	87.7	87.3
Power to heat ratio***		0.91	0.91

* The electrical output of 1880 kWel is also achieved with natural gas applications.
 ** According to ISO 3046-1
 *** The power to heat ratio is calculated by dividing the electrical efficiency by the thermal efficiency. Please remember that this is a theoretical value that may deviate from actually measured values.
 The values given in these tables are information purposes only and not binding. The information given in the offer is decisive. Other unit variants with other generators are available.

Biogas, Landfill Gas, and Sewage Gas Applications, NO_x ≤ 500 mg/Nm³*

		TCG 3020 V12 X = Optimized for operation with all biogases	TCG 3020 V16 X = Optimized for operation with all biogases	TCG 3020 V20 X = Optimized for operation with all biogases	TCG 3020 V20 XV = Optimized for operation with all biogases for requested power		
Engine type		50 Hz	50 Hz	50 Hz	60 Hz	50 Hz	60 Hz
Electrical output	kW	1,380	1,840	2,300	2,300	2,000	2,000
Electrical efficiency**	%	43.6	43.6	43.6	43.1	43.2	42.7
Thermal output	kW			2,254	2,206	2,015	1,983
Thermal efficiency**	%	42.7	42.7	42.9	41.4	43.5	42.3
Overall efficiency	%	86	86	87	85	87	85
Power to heat ratio***		1.02	1.02	1.02	1.07	1.04	1.03

* With 5% O₂ and dry exhaust gas
 ** According to ISO 3046-1
 *** The power to heat ratio is calculated by dividing the electrical efficiency by the thermal efficiency. Please remember that this is a theoretical value that may deviate from actually measured values.
 The values given in these tables are information purposes only and not binding. The information given in the offer is decisive. Other unit variants with other generators are available.

Biogas, Landfill Gas, and Sewage Gas Applications, NO_x ≤ 250 mg/Nm³*

		TCG 3020 V12 X = Optimized for operation with all biogases	TCG 3020 V16 X = Optimized for operation with all biogases	TCG 3020 V20 X = Optimized for operation with all biogases	TCG 3020 V20 XV = Optimized for operation with all biogases for requested power		
Engine type		50 Hz	50 Hz	50 Hz	60 Hz	50 Hz	60 Hz
Electrical output	kW	1,380	1,840	2,300	2,300	2,000	2,000
Electrical efficiency**	%	42.6	42.6	42.7	42.2	42.2	41.7
Thermal output	kW			2,346	2,293	2,097	2,060
Thermal efficiency**	%	43.4	43.5	43.5	42	44.3	43
Overall efficiency	%	86	86	86	84	87	85
Power to heat ratio***		0.98	0.98	0.98	1	1	0.97

* With 5% O₂ and dry exhaust gas
 ** According to ISO 3046-1
 *** The power to heat ratio is calculated by dividing the electrical efficiency by the thermal efficiency. Please remember that this is a theoretical value that may deviate from actually measured values.
 The values given in these tables are information purposes only and not binding. The information given in the offer is decisive. Other unit variants with other generators are available.

Dimensions and Weights

Engine type		TCG 3020 V12 50Hz	TCG 3020 V16 50Hz	TCG 3020 V20 50 Hz		TCG 3020 V20 60 Hz		TCG 3020 V20 Z = Optimized for operation with propane gas 50 Hz		TCG 3020 V20 60 Hz	
Bore / stroke	mm	170/195	170/195	170/195	170/195	170/195	170/195	170/195	170/195	170/195	170/195
Displacement	dm ³	53	71	89	89	89	89	89	89	89	89
Speed	min ⁻¹	1,500	1,500	1,500	1,500	1,500	1,500	1,500	1,500	1,500	1,500
Mean piston speed	m/s	9.8	9.8	9.8	9.8	9.8	9.8	9.8	9.8	9.8	9.8
Length	mm	5,080	6,100	6,600	7,738	6,500	7,738	6,500	7,738	6,500	7,738
Width	mm	1,815	1,815	1,815	1,815	1,815	1,815	1,815	1,815	1,815	1,815
Height	mm	2,190	2,190	2,190	2,551	2,190	2,551	2,190	2,551	2,190	2,551
Dry weight genset	kg	12,900	17,400	21,400	21,200	17,980	21,200	17,980	21,200	17,980	21,200

The values given in this table are information purposes only and not binding. The information given in the offer is decisive. Other unit variants with other generators are available.

Service Intervals

	First Service *	Cylinder head inspection	General overhaul
High gas quality (natural gas, mine gas (purified) propane gas)	4,000 oh	40,000 oh**	80,000 oh
Medium gas quality (biogas (purified), mine gas)	4,000 oh	32,000 oh**	64,000 oh
Gas quality Low (biogas, landfill gas, sewage gas)	3,000 oh	24,000 oh**	48,000 oh

*
 ** “after commissioning (E10)” at the latest

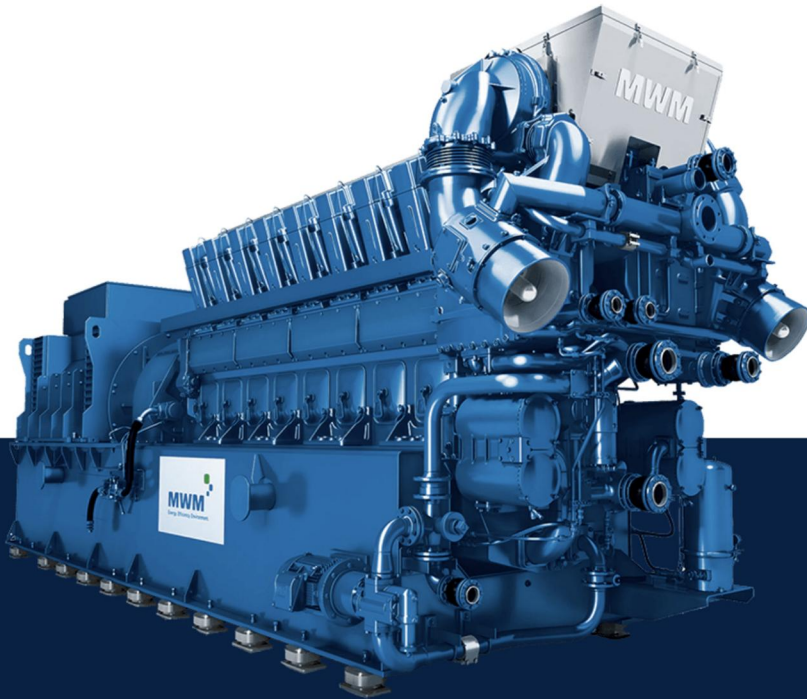
The values given in this table are information purposes only and not binding. The information given in the offer is decisive. Other unit variants with other generators are available.

4166kVA	5625kVA
3750kVA	5062kVA

50Hz
60Hz

MWM TCG 2032 V12, V16 Gas Engine – High Reliability. Low Operating Costs.

TCG 2032



High reliability. Low operating costs. Mainly used in large IPP projects, up to 100 MWeI.

- Output range from 3,000 to 4,500 kWel
- Runs on all gas types
- Designed for natural gas operation with hydrogen admixture of up to 25 vol%
- Also available with fast ramp-up option for the gas engine TCG 2032B V16

Compelling Arguments – Features at a Glance.

- Output range from 3,000 to 4,500 kWel
- Runs on all gas types: natural gas, landfill gas, sewage gas, mine gas, coke oven gas, biogas(1) and hydrogen admixtures up to 25 vol%
- MWM 25H2-Kit available for conversion for operation with hydrogen admixture of up to 25 vol%
- Mainly used in large IPP projects with up to 100,000 kWel
- The series features superb reliability and low operating and maintenance costs.
- High reliability
- Low operating costs
- Also available with fast ramp-up option for the gas engine TCG 2032B V16
- More than 965 power generators with approximately 3,840,000 kWel already installed around the globe(1) TCG 2032 V12 gas engine not available for biogas.

Description – MWM Gas Engine TCG2032

TCG 2032 –High Efficiency and Low Lubricant Consumption

- High fuel utilization and low operation costs thanks to optimized chamber spark plug
- Increased efficiency through new closed crankcase ventilation that enables utilization of the blow-by gas
- High availability through long maintenance intervals: first maintenance after 4,000 h, major overhaul after 80,000 h
- With its lubricant consumption of only 0.2 g/kWh up to 30 percent lower lubricant consumption compared to competitor products thanks to optimized tappet sealing, coke stripping rings and ring packages

Soot-Free Combustion Increases Plant Profitability

- FOpen combustion chamber with chamber spark plug for soot-free combustion
- Extended maintenance intervals for the exhaust gas heat exchanger
- No pre-combustion chamber with time-consuming maintenance and risk of failure
- No additional gas supply with increased gas pressure required for pre-combustion chamber

Few Interruptions Due to Long Maintenance Intervals

- No more than two interruptions a year due to scheduled maintenance

- Longest interval until major overhaul compared to competitors
- Use of Xchange components enables time savings of up to 75 percent during the major overhaul, resulting in reduced costs

New Turbocharger Technology Increases Genset Availability

- Improved output under non-ISO conditions
- High output of 4,500 kWel possible through use of A140 high-pressure turbocharger
- Turbocharger achieves higher compression ratio and enables operation under full load with intake air of up to 45° C
- Exhaust gas waste gate enables constant performance with different intake air temperatures and setup altitudes
- Evening out of reserve boost pressure in relation to load results in higher efficiency and improved load response

Compact Engine Design for Easy Transport and Installation

- Extremely lean genset with compact dimensions, low noise emissions, and smooth running guarantees minimum installation costs
- Compared to competitors, the specific output/weight ratio is up to 40 percent better
- Lighter engine components eliminate need for strong crane
- Compared to competitors, TCG 2032 V16 is up to 30 percent shorter in length
- Low weight and compact dimensions enable easy transport even to remote destinations

Short Project Period Thanks to Compact Setup

- Pre-manufactured components directly from the manufacturer ensure quick and easy assembly on site
- Identical setup of the individual modules facilitates flexible adjustment of the plant output
- Modest need for space through compact design
- Plant planning and building from one source guarantees smooth, cost-efficient project rollout
- Low Service Costs and a Lean Maintenance Concept
- Enhanced maintenance concept through easy access to the cylinder units
- Long service intervals and improved serviceability

Low maintenance costs due to fewer engine parts,

- resulting in low maintenance overhead and spare parts requirement
- Lower maintenance overhead through open combustion chamber with pre-combustion chamber spark plug

Performance Data – MWM Gas Engine TCG 2032

Natural Gas Applications, NO_x ≤ 500 mg/Nm³*

Engine type		TCG 2032 V12 R = Optimized for high total efficiency		TCG 2032 V16 R = Optimized for high total efficiency		TCG 2032B V16 R = Optimized for high total efficiency	
		50 Hz	60 Hz**	50 Hz	60 Hz**	50 Hz	60 Hz**
Electrical output	kW	3,333	3,000	4,300	4,000	4,500	4,050
Mean effective pressure	bar	20	20.1	19.4	20.2	20.3	20.4
Thermal output ± 8%	kW	3,238	2,877	4,164	3,866	4,361	3,891
Electrical efficiency***	%	43.9	43.9	44.1	43.8	44.6	44.3
Thermal efficiency***	%	42.6	42.1	42.7	42.4	43.2	42.6
Total efficiency	%	86.5	85.9	86.8	86.2	87.8	86.9
Power to heat ratio****		1.03	1.04	1.03	1.03	1.03	1.04

* 5% O₂ and dry exhaust gases

** On request

*** According to ISO 8528-1

**** The power to heat ratio is calculated by dividing the electrical efficiency by the thermal efficiency. Please remember that this is a theoretical value that may deviate from actually measured values.

The values given in these tables are information purposes only and not binding. The information given in the offer is decisive. Other unit variants with other generators are available.

Natural Gas Applications with 25 vol% Hydrogen (NO_x ≤ 500 mg/Nm³* / 1.0 g/bhph*)

Engine type		TCG 2032 V12 R+ High Response plus 25H2-Kit = Optimized for high total efficiency with 25 vol.% hydrogen kit		TCG 2032 V16 R+ High Response plus 25H2-Kit = Optimized for high total efficiency with 25 vol.% hydrogen kit		TCG 2032B V16 R+ High Response plus 25H2-Kit = Optimized for high total efficiency with 25 vol.% hydrogen kit	
		50 Hz	60 Hz	50 Hz	60 Hz	50 Hz	60 Hz
Electrical output**	kW	3,333	3,000	4,300	4,000	4,500	4,050
Electrical efficiency	%	43.7	43.7	44	43.8	44.5	44.3
Thermal efficiency***(±8 %)	%	42.7	42.2	42.8	42.5	43.3	42.7
Total efficiency	%	86.4	85.9	86.8	86.3	87.8	87
Power to heat ratio****		1.02	1.03	1.03	1.03	1.03	1.04

* 5% O₂ and dry exhaust gases

** According to ISO 3046-1

*** Exhaust gas cooled to 120 °C for natural gas

**** The power to heat ratio is calculated by dividing the electrical efficiency by the thermal efficiency. Please remember that this is a theoretical value that may deviate from actually measured values.

The values given in these tables are information purposes only and not binding. The information given in the offer is decisive.

Other unit variants with other generators are available.

Biogas, Landfill Gas, and Sewage Gas Applications, NO_x ≤ 500mg/Nm³*

Engine type		TCG 2032 V16 X = Optimized for operation with biogases	
		50 Hz	60 Hz**
Electrical output	kW	3,770	3,510
Mean effective pressure	bar	17	17
Thermal output ± 8%	kW	3,487	3,117
Electrical efficiency***	%	42.9	43.3
Thermal efficiency***	%	39.7	38.5
Total efficiency	%	82.7	81.8
Power to heat ratio****		1.08	1.12

* 5% O₂ and dry exhaust gases

** On request

*** According to ISO 8528-1

**** The power to heat ratio is calculated by dividing the electrical efficiency by the thermal efficiency. Please remember that this is a theoretical value that may deviate from actually measured values.

The values given in this table are information purposes only and not binding. The information given in the offer is decisive. Other unit variants with other generators are available.

Dimensions and Weights

Engine type		TCG 2032 V12		TCG 2032 V16	
		50 Hz	60 Hz*	50 Hz	60 Hz*
Length	mm	7,860	8,000	9,271	9,420
Width	mm	2,660	2,790	2,790	2,790
Height	mm	3,390	3,390	3,390	3,390
Dry weight genset	kg	43,100	40,650	51,200	52,400
Bore / stroke	mm	260/320	260/320	260/320	260/320

* On request

The values given in this table are information purposes only and not binding. The information given in the offer is decisive. Other unit variants with other generators are available.

Service Intervals

	First service (check valve clearance)*	Mixture cooler cleaning	Cylinder head inspection	Major overhaul
Natural gas	4,000 oh	20,000 oh	40,000 oh	80,000 oh

* "after commissioning (E10)"

The values given in this table are information purposes only and not binding. The information given in the offer is decisive. Other unit variants with other generators are available.



